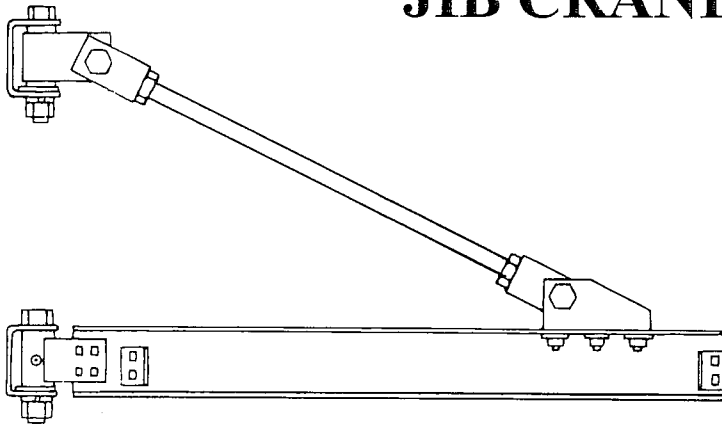




**SPARE PARTS,
INSTRUCTION AND
MAINTENANCE MANUAL
FOR MODEL 301
JIB CRANES**



**THE FIRST NAME IN JIBS...
for efficient material handling**

Morgantown Business Park
604 Hemlock Road
Morgantown, PA 19543
www.spanco.com
sales@spanco.com



Spare Parts, Instruction, and Maintenance Manual for Model 301 Jib Cranes

TABLE OF CONTENTS

Forward.....	4
Installation.....	4
Maintenance.....	6
Specifications Model 301-050.....	7
Specifications Model 301-100.....	8
Specifications Model 301-200.....	9
Specifications Model 301-300.....	10
Specifications Model 301-500.....	11
Wall Bracket Diagram.....	12
Parts List Model 301-(50/100).....	13
Parts List Model 301-200.....	14
Parts List Model 301-300.....	15
Parts List Model 301-500.....	16
Tag Line Support System Diagram.....	17
SPANCO Warranty and Service Policy.....	18

FORWARD

This manual contains important information to help you install, operate, maintain, and service your new jib crane. We recommend that you study its contents thoroughly before putting the jib into use. We also recommend that you obtain the latest issue of ANSI B30.11 Safety Standard for Monorails and Underhung Cranes and study its contents thoroughly. By practicing the recommended maintenance suggestions, with proper installation, and application of correct operating procedures you will be assured maximum service from your jib crane.

The jibs described in this manual are intended for indoor service. Jib cranes used for outdoor service require special consideration.

Information contained in this manual is subject to change without notice.

INSTALLATION

Before attempting to install your new jib crane, the following items must be understood:

1. It is the customer's responsibility to ensure that building columns or walls are adequate to support the crane and its rated load.
2. Jib cranes should not be hung from any existing building structure without first consulting a qualified architect or engineer for the purpose of determining the structure's adequacy.

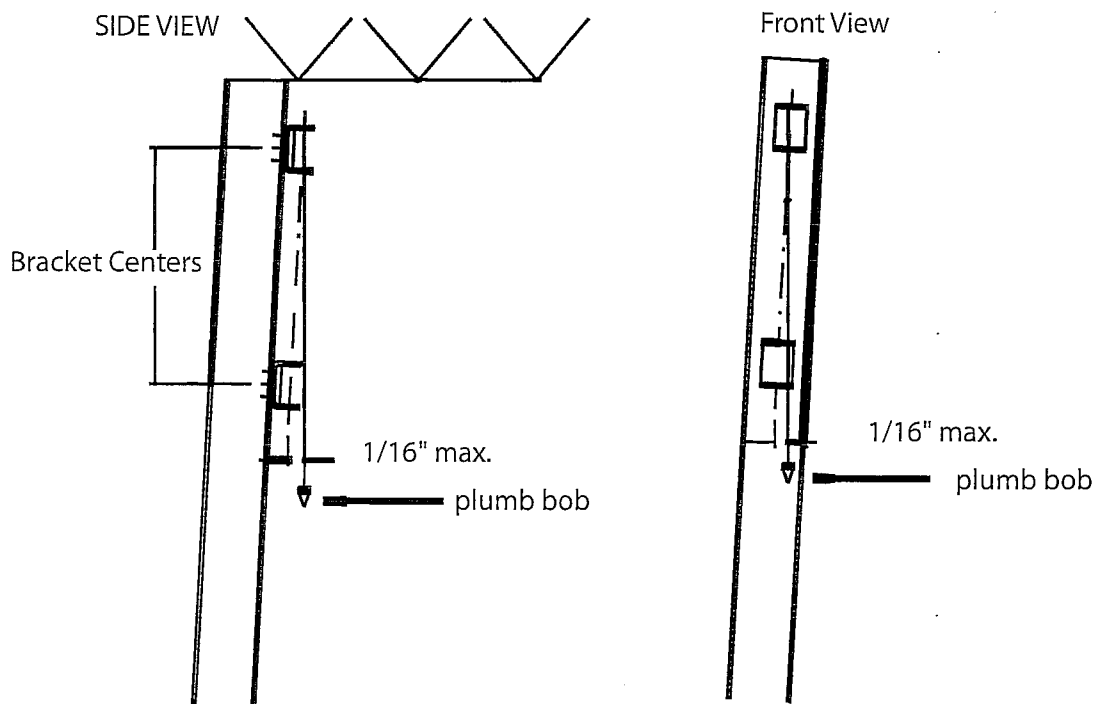
WARNING

Do not mount the jib crane to any structure unless you are sure the structure can safely support the loads imposed upon the structure. Failure to check this item can result in bodily injury or death.

3. The installer is responsible for supplying the correct size, length, number, and type of bolts required to attach the jib crane brackets to the structure. SPANCO recommends that the bolts be ASTM A325 grade.
4. Plan the installation such that the proper clearance as outlined in ANSI B30.11 will be adhered to. In the design of jib crane systems, all factors that influence clearances, such as roof truss sag, and boom deflection shall be considered.

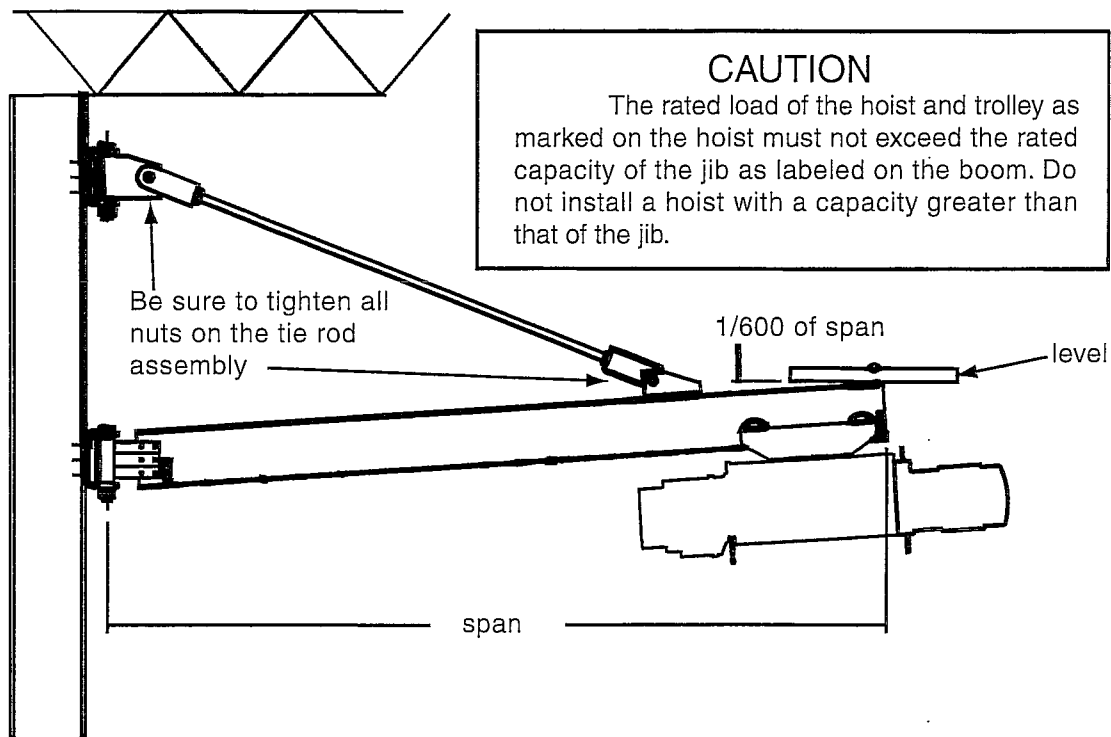
After the above four points have been covered, you may begin the installation procedures as follows:

1. Refer to Table 1 in this manual and locate the dimensions of the specific Model 301 jib crane to be installed.
2. Determine the elevation of the top wall bracket by adding the "Bracket Centers" dimension to the desired elevation of the bottom of the boom plus $\frac{1}{2}$ the boom height.
3. Hold the top wall bracket against the supporting column in its proper location with a C clamp or other supporting method.
4. Establish the correct distance from the top wall bracket to the bottom wall bracket from Table 1. Hold the bottom wall bracket against the supporting column with a C clamp or other supporting method.
5. Use a plumb bob to check the alignment of the bottom bracket with the top bracket in two planes. The alignment must be within $\frac{1}{16}$ inch from top to bottom.



6. Using the wall brackets as a template, mark the established hole locations.
7. Drill the holes in the column for the wall brackets.
8. Mount the wall brackets and their shims (if used) to the column with bolts (ASTM A-325) supplied by the installer. Care should be taken to insure all bolts are properly tightened.
9. Lift the boom assembly with its brackets and tie rod assembly attached with a lift truck or other means into place. Insert the top pivot assembly and the bottom pivot assembly into its respective wall brackets. Insert the top and bottom pin bolts into the bracket assemblies and properly tighten the nuts.

10. Remove the end stop angles from the boom tip and install the hoist and trolley onto the boom. Refer to the hoist manufacturer's manual for proper setting of the trolley wheels to match the boom beam. **Remember to reinstall the end stop angles on the boom and properly tighten the nuts after installation of the hoist trolley on the jib..**
11. Position the unloaded hoist and trolley at the extreme tip of the boom and adjust the tie rod assembly such that the boom is slightly sloped uphill under no load. To compensate for anticipated deflection, the boom tip should be adjusted to an elevation equal to boom length (inches) \div 600 above level.



12. Connect the hoist to its source of power (either air or electric) if required, as per the hoist manufacturer's manual.
13. Now that the jib crane installation is complete, but before the unit is placed into service, it is important to review and to follow procedures outlined in Chapter 11-2 of ANSI B30.11 regarding inspection, testing, and maintenance.

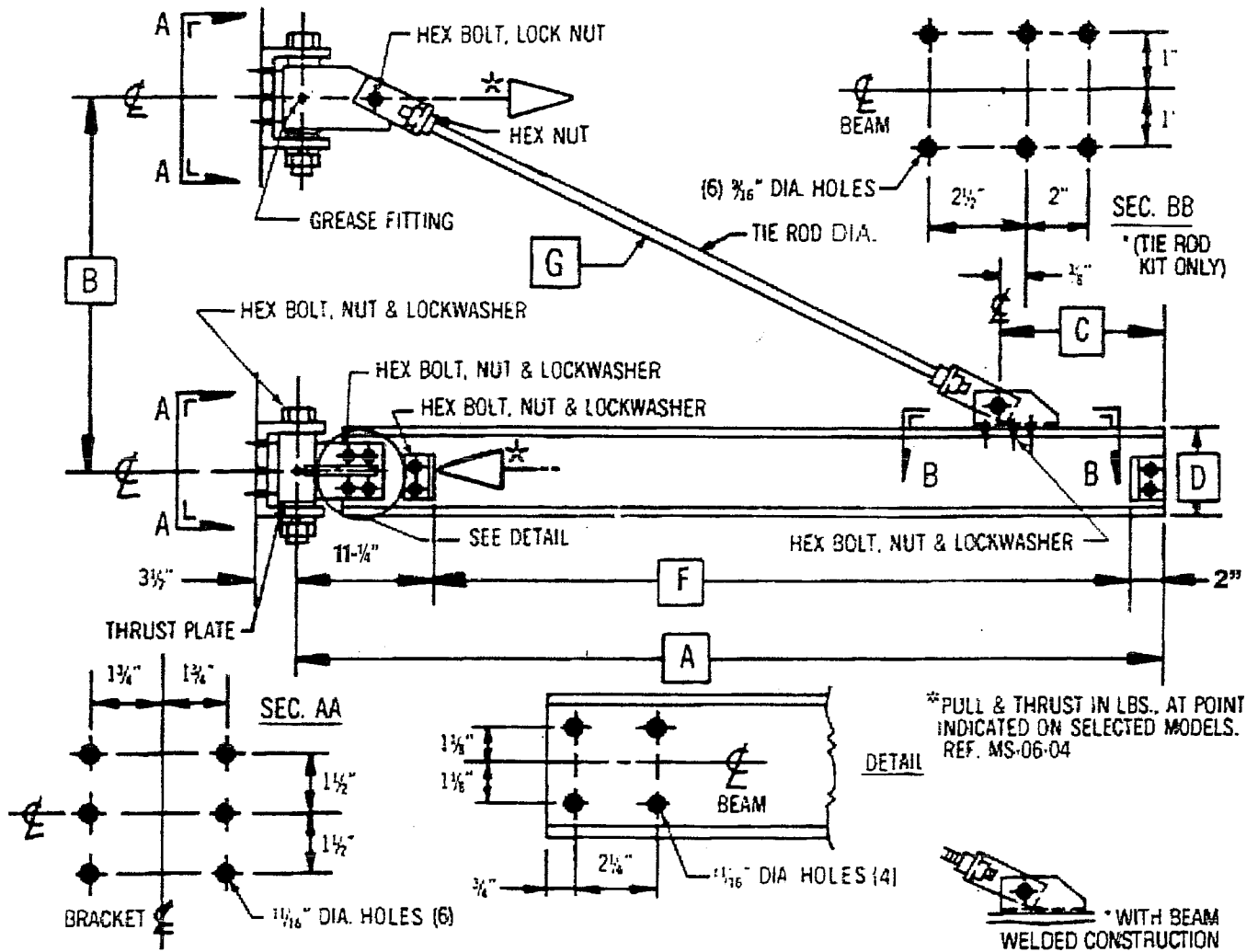
MAINTENANCE

By definition, the term "jib crane" includes the jib, the trolley, and the hoist, along with any attachment that may exist. The user should refer to the manual supplied with the hoist and trolley for a listing of maintenance points and suggested frequency.

With the regards to the SPANCO jib, the only maintenance item is that of wall bracket lubrication. The sleeve bearings in those brackets are pre-lubricated at the factory. Field lubrication of those bearings is required based upon usage of the crane. SPANCO recommends that the bearings be lubricated at least once a year. The grease should be lithium soap based grease, consistency No. NLGI 2.

WALL BRACKET JIB CRANE-200° ROTATION

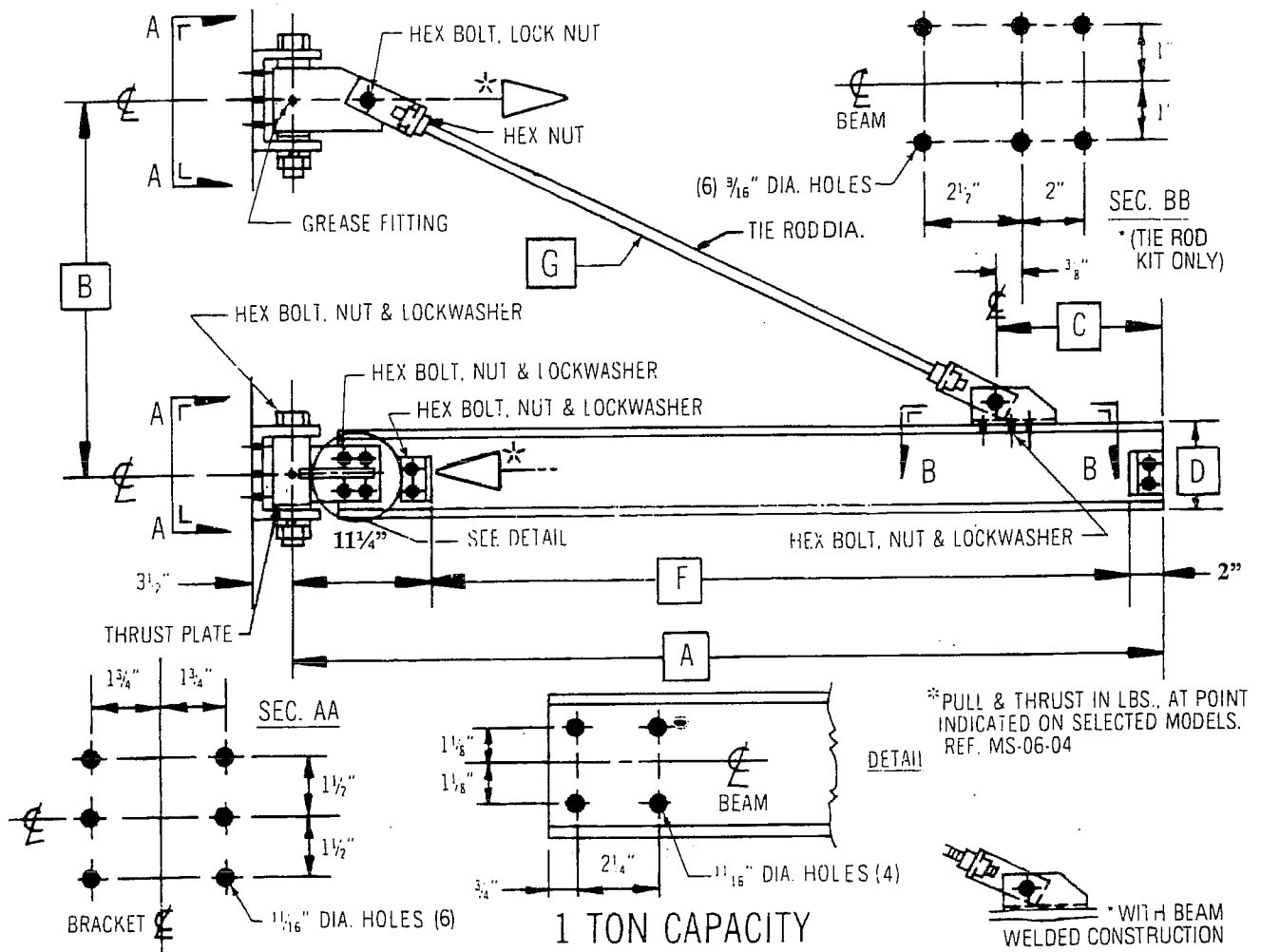
MODEL-301-050 -



1/2 TON CAPACITY

A	SPAN	8'	10'	12'	14'	16'	18'	20'	22'	24'	26'	28'	30'
B	WALL BRACKET CENTER	2'-9"	3'-0"	3'-9"	4'-6"	5'-6"	6'-0"	6'-6"	7'-0"	7'-6"	8'-0"	9'-0"	10'-0"
C	BEAM BRACKET CENTER	1'-3"	1'-6"	1'-9"	2'-0"	2'-0"	2'-0"	2'-3"	2'-3"	2'-6"	2'-6"	3'-0"	3'-6"
D	BEAM WGT/FT.	.6	6	6	6	6	8	10	10	10	10	12	12
E	CAP CHANNEL WGT/FT	-	-	-	-	-	-	-	8 11.5	8 11.5	8 11.5	8 11.5	8 11.5
F	CLEAR SPAN	6'-9 1/4"	8'-9 1/4"	10'-9 1/4"	12'-9 1/4"	14'-9 1/4"	16'-9 1/4"	18'-9 1/4"	20'-9 1/4"	22'-9 1/4"	24'-9 1/4"	26'-9 1/4"	28'-9 1/4"
G	TIE ROD LENGTH	5'-7"	7'-4"	9'-5"	11'-2"	13'-4"	15'-5"	17'-2"	19'-3"	21'-1"	23'-1"	25'-1"	26'-7"

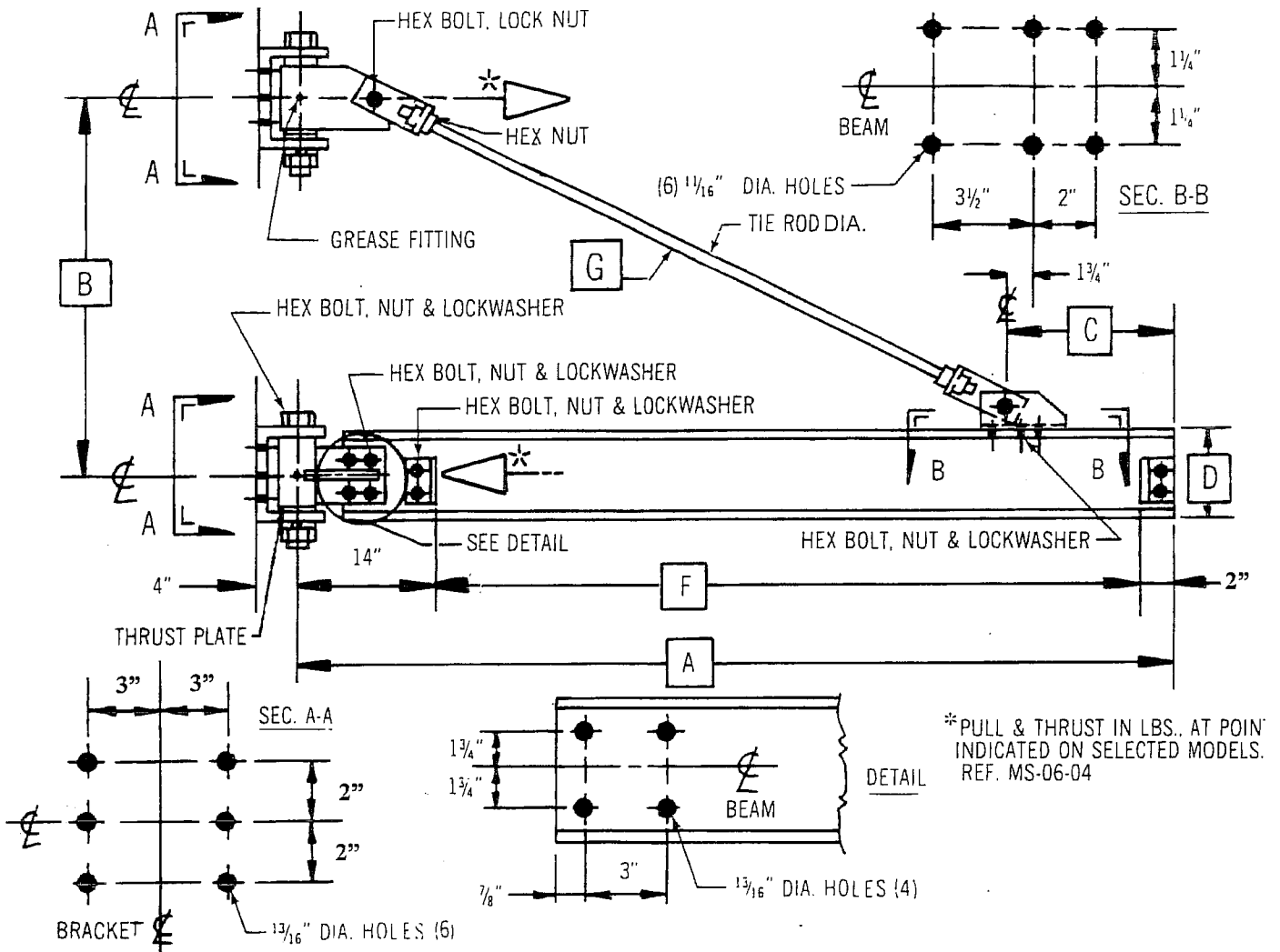
WALL BRACKET JIB CRANE-200° ROTATION MODEL-30I-100 -



1 TON CAPACITY

A	SPAN	8'	10'	12'	14'	16'	18'	20'	22'	24'	26'	28'	30'
B	WALL BRACKET CENTER	2' - 9"	3' - 0"	3' - 9"	4' - 6"	5' - 6"	6' - 0"	6' - 6"	7' - 0"	7' - 6"	8' - 0"	9' - 0"	10' - 0"
C	BEAM BRACKET CENTER	1' - 3"	1' - 6"	1' - 9"	2' - 0"	2' - 3"	2' - 6"	2' - 6"	2' - 9"	3' - 9"	3' - 0"	3' - 6"	3' - 6"
D	BEAM WGT/FT.	6 12.5	6 12.5	6 12.5	8 18.4	8 18.4	8 18.4	10 25.4	10 25.4	10 25.4	10 25.4	12 31.8	12 31.8
E	CAP CHANNEL WGT/FT	-	-	-	-	-	-	-	6 8.2	6 8.2	6 8.2	8 11.5	8 11.5
F	CLEAR SPAN	6' - 10 3/4"	8' - 10 3/4"	10' - 10 3/4"	12' - 10 3/4"	14' - 10 3/4"	16' - 10 3/4"	18' - 10 3/4"	20' - 10 3/4"	22' - 10 3/4"	24' - 10 3/4"	26' - 10 3/4"	28' - 10 3/4"
G	TIE ROD LENGTH	5' - 7"	7' - 4"	9' - 5"	11' - 2"	13' - 4"	14' - 11"	16' - 11"	19' - 1"	20' - 0"	22' - 7"	24' - 4"	26' - 7"

WALL BRACKET JIB CRANE-200° ROTATION MODEL-301-200 -

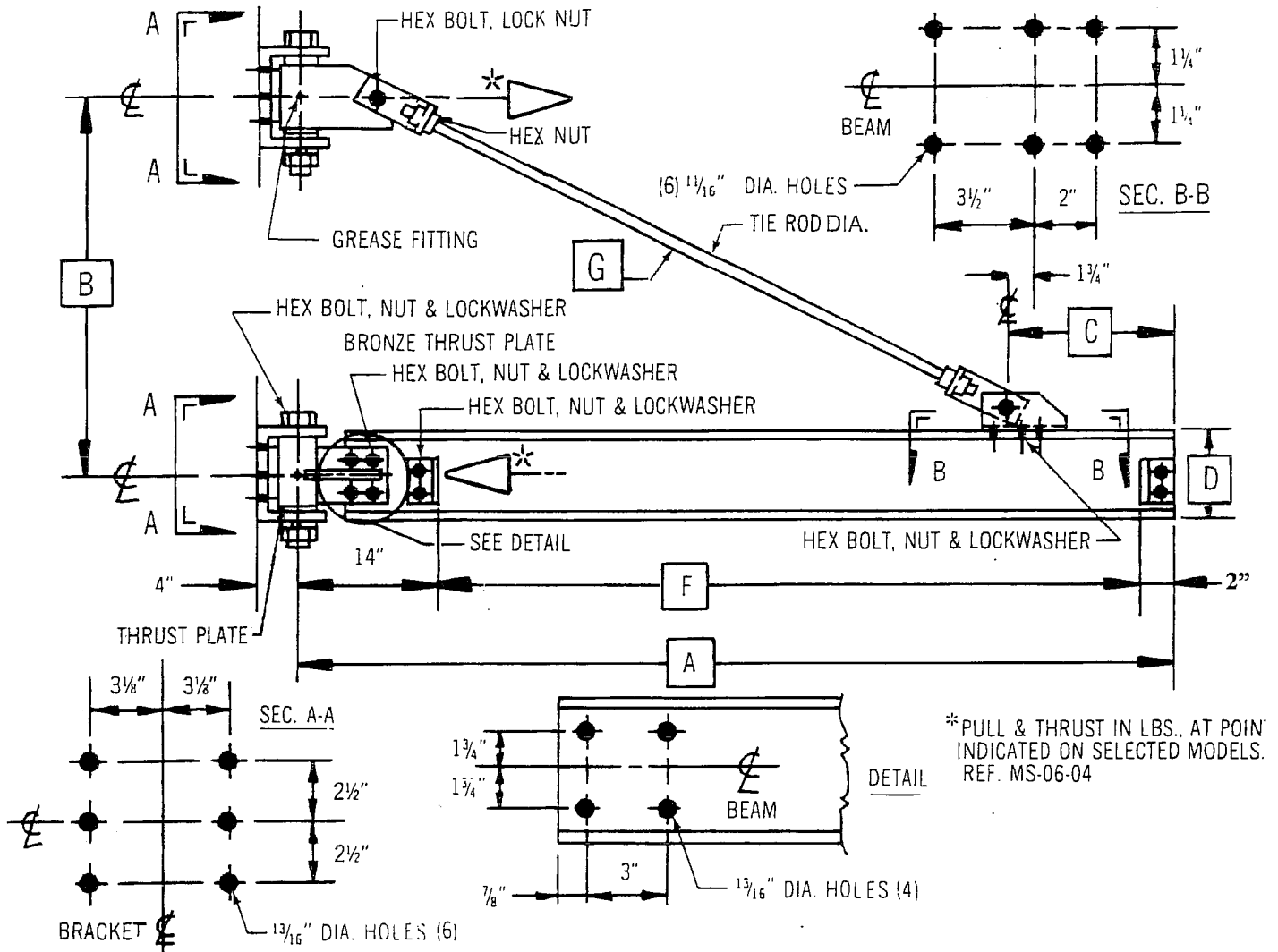


2 TON CAPACITY

A	SPAN	8'	10'	12'	14'	16'	18'	20'	22'	24'	26'	28'	30'
B	WALL BRACKET CENTER	2' - 9"	3' - 0"	3' - 9"	4' - 6"	5' - 6"	6' - 0"	6' - 6"	7' - 0"	7' - 6"	8' - 0"	9' - 0"	10' - 0"
C	BEAM BRACKET CENTER	1' - 3"	1' - 6"	1' - 9"	2' - 0"	2' - 3"	2' - 3"	2' - 6"	2' - 6"	3' - 6"	3' - 6"	3' - 6"	3' - 0"
D	BEAM WGT/FT.	8 18.4	8 18.4	8 18.4	8 18.4	10 25.4	10 25.4	12 31.8	12 31.8	12 31.8	12 31.8	12 31.8	12 31.8
E	CAP CHANNEL WGT/FT	-	-	-	-	-	-	-	8 11.5	8 11.5	8 11.5	8 11.5	8 11.5
F	CLEAR SPAN	6' - 8"	8' - 8"	10' - 8"	12' - 8"	14' - 8"	16' - 8"	18' - 8"	20' - 8"	22' - 8"	24' - 8"	26' - 8"	28' - 8"
G	TIE ROD LENGTH	5' - 11"	7' - 8"	9' - 6"	11' - 5"	13' - 4"	15' - 5"	17' - 2"	19' - 3"	20' - 0"	22' - 7"	24' - 10"	27' - 4"

WALL BRACKET JIB CRANE-200° ROTATION

MODEL-301- 300 -

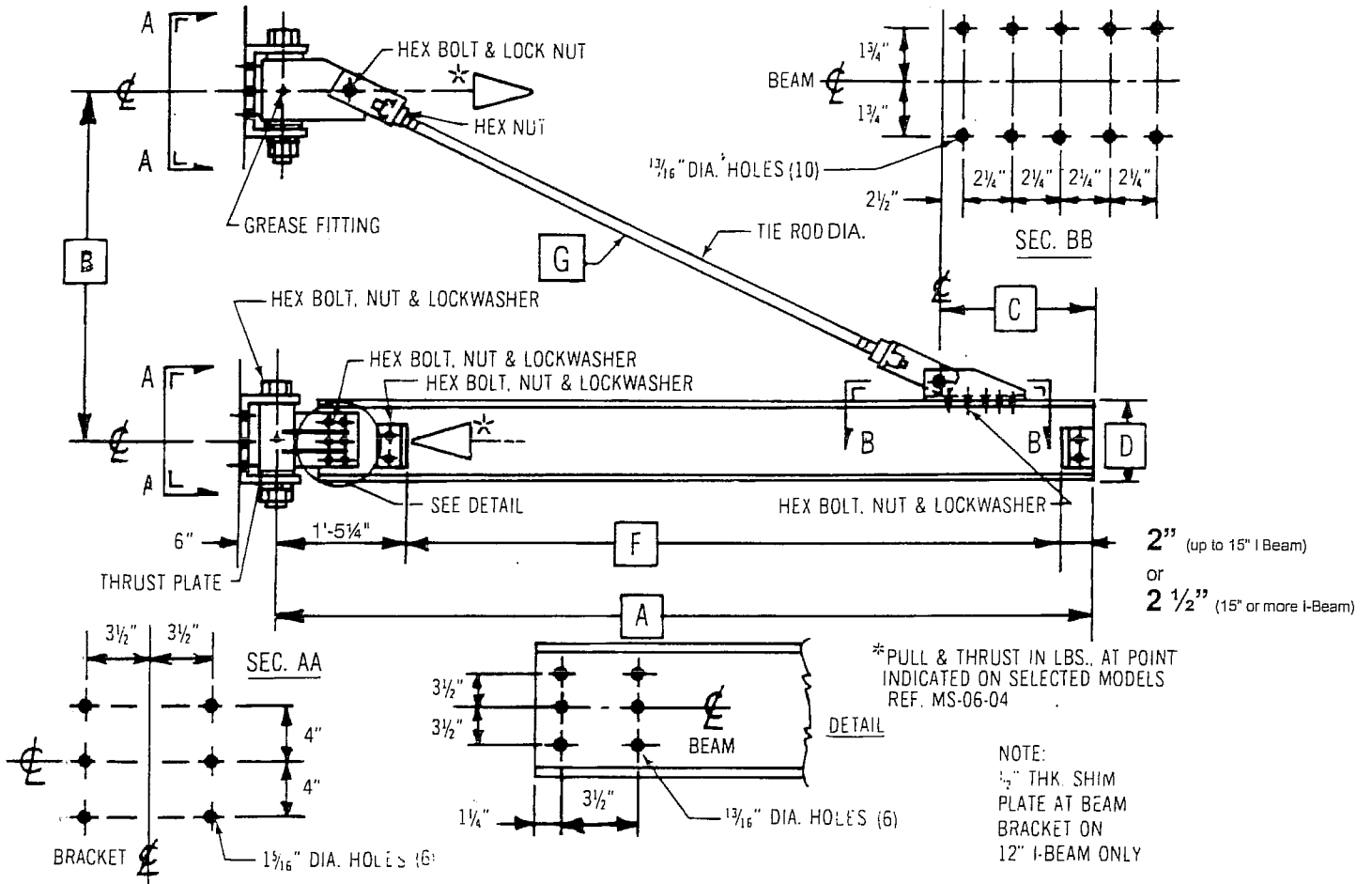


3 TON CAPACITY

A	SPAN	8'	10'	12'	14'	16'	18'	20'	22'	24'	26'	28'	30'
B	WALL BRACKET CENTER	2' - 9"	3' - 3"	4' - 0"	4' - 9"	5' - 6"	6' - 3"	7' - 0"	7' - 9"	8' - 6"	9' - 3"	10' - 0"	11' - 0"
C	BEAM BRACKET CENTER	1' - 3"	1' - 6"	1' - 9"	2' - 0"	2' - 3"	2' - 3"	2' - 6"	2' - 6"	3' - 6"	3' - 0"	3' - 0"	3' - 0"
D	BEAM WGT/FT.	8 18.4	8 18.4	8 18.4	8 18.4	10 25.4	10 25.4	12 31.8	12 31.8	12 31.8	12 31.8	12 31.8	12 31.8
E	CAP CHANNEL WGT/FT	-	-	-	-	-	-	-	8 11.5	8 11.5	8 11.5	8 11.5	8 11.5
F	CLEAR SPAN	6' - 8"	8' - 8"	10' - 8"	12' - 8"	14' - 8"	16' - 8"	18' - 8"	20' - 8"	22' - 8"	24' - 8"	26' - 8"	28' - 8"
G	TIE ROD LENGTH	5' - 2"	7' - 0"	8' - 10"	10' - 9"	12' - 7"	14' - 9"	16' - 8"	18' - 9"	20' - 0"	22' - 6"	24' - 8"	26' - 11"

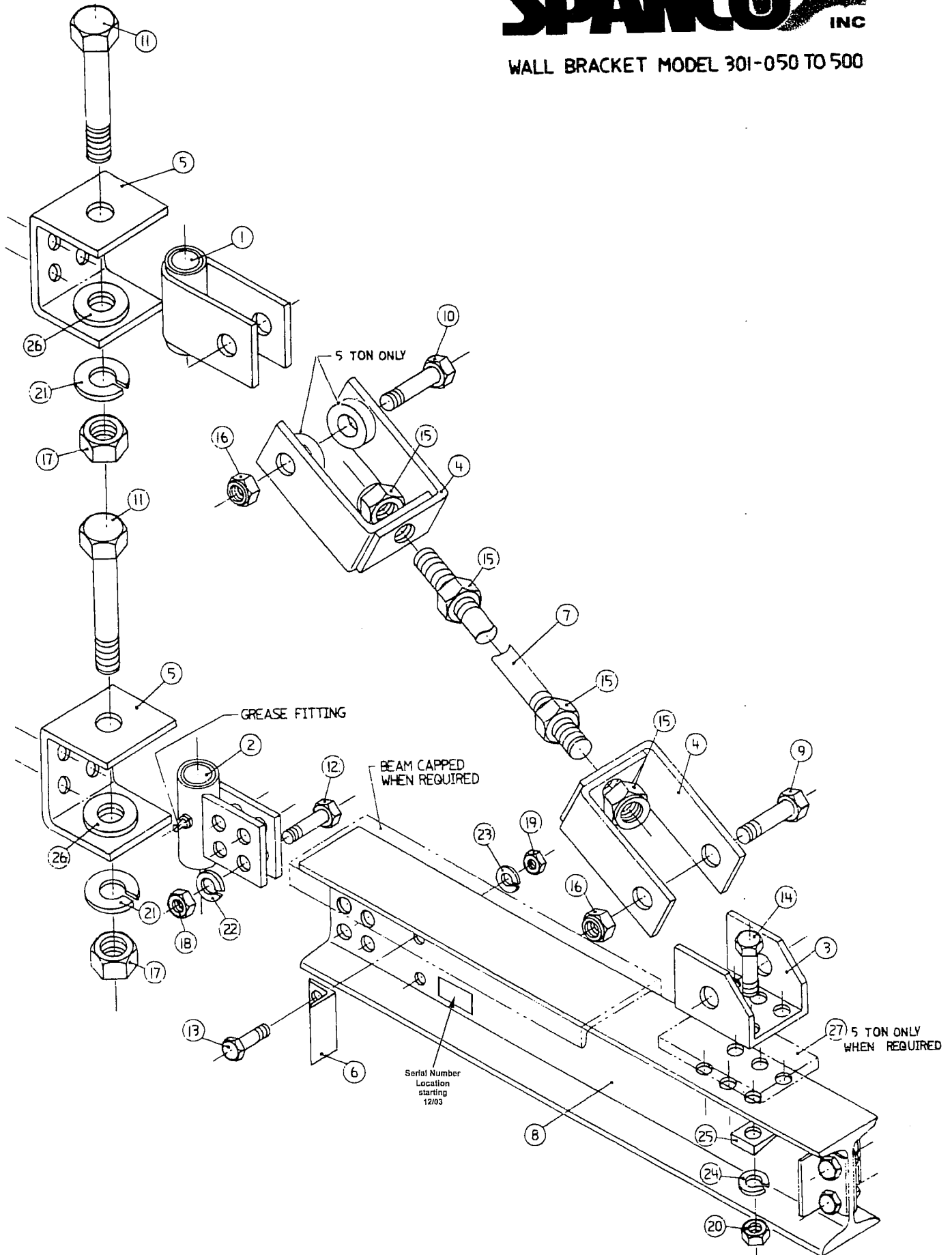
WALL BRACKET JIB CRANE-200° ROTATION

MODEL-301- 500 -



5 TON CAPACITY

A	SPAN	8'	10'	12'	14'	16'	18'	20'	22'	24'	26'	28'	30'
B	WALL BRACKET CENTER	3' - 0"	3' - 3"	4' - 0"	4' - 9"	5' - 6"	6' - 3"	7' - 0"	7' - 9"	8' - 6"	9' - 3"	10' - 0"	11' - 0"
C	BEAM BRACKET CENTER	1' - 3"	1' - 6"	1' - 9"	2' - 0"	2' - 3"	2' - 3"	2' - 6"	2' - 6"	3' - 6"	3' - 6"	3' - 6"	3' - 6"
D	BEAM WGT/FT.	12 31.8	12 31.8	12 31.8	12 31.8	15 42.9	15 42.9	15 42.9	15 42.9	15 42.9	15 42.9	15 42.9	15 42.9
E	CAP CHANNEL WGT/FT	-	-	-	-	-	-	-	10 15.3	10 15.3	10 15.3	10 15.3	10 15.3
F	CLEAR SPAN	6' - 4 3/4"	8' - 4 3/4"	10' - 4 3/4"	12' - 4 3/4"	14' - 4 1/4"	16' - 4 1/4"	18' - 4 1/4"	20' - 4 1/4"	22' - 4 1/4"	24' - 4 1/4"	26' - 4 1/4"	28' - 4 1/4"
G	TIE ROD LENGTH	4' - 6"	6' - 5"	8' - 4"	10' - 3"	11' - 10"	13' - 6"	15' - 2"	17' - 4"	19' - 6"	21' - 7"	23' - 9"	25' - 11"



SPANCO, INC.
BILL OF MATERIALS
WALL BRACKET (TIE ROD) JIB CRANE
MODEL 301 (050/100)

ITEM	DESCRIPTION	PART. NO.	QTY.
1	TOP PIVOT ASSY.	06-0465	1
2	BOTTOM PIVOT ASSY.	06-0469	1
3	BEAM BRACKET	06-0051	1
4	ROD CLEVIS	06-0530	2
5	WALL BRACKET	06-0521	2
6	END STOP (6",8" BEAM)	06-0310	4
6	END STOP (10", 12" BEAM)	06-0311	4
7	TIE ROD		1
8	BEAM		1
9	HEX BOLT	10-0504	1
10	HEX BOLT	06-3132	1
11	HEX BOLT	10-0604	2
12	HEX BOLT	10-0301	4
13	HEX BOLT(6", 8" BEAM)	10-0202	4
14	HEX BOLT(10",12" BEAM)	10-0203	6
15	HEX NUT	11-0080	4
16	LOCK NUT	13-0020	2
17	HEX NUT	11-0080	2
18	HEX NUT	11-0040	4
19	HEX NUT	11-0030	4
20	HEX NUT	11-0030	6
21	LOCK WASHER	14-0007	2
22	LOCK WASHER	14-0004	4
23	LOCK WASHER	14-0003	4
24	LOCK WASHER	14-0003	6
25	BEVEL WASHER	16-0001	6
26	THRUST PLATE	36-0008	2

ORDERING REPAIR PARTS

When ordering repair parts from this manual, be sure to state the model and serial number of the unit. This information can be found on the small metal plate attached to the jib crane. The hardware kits are determined by the capacity of the jib crane.

SPANCO, INC.
BILL OF MATERIALS
WALL BRACKET (TIE ROD) JIB CRANE
MODEL 301 (200)

ITEM	DESCRIPTION	PART. NO.	QTY.
1	TOP PIVOT ASSY.	06-0466	1
2	BOTTOM PIVOT ASSY.	06-0478	1
3	BEAM BRACKET	06-0552 WLD	1
4	ROD CLEVIS	06-0585	2
5	WALL BRACKET	06-0522	2
6	END STOP (6",8" BEAM)	06-0310	4
6	END STOP (10", 12" BEAM)	06-0311	4
7	TIE ROD		1
8	BEAM		1
9	HEX BOLT	06-3157	1
10	HEX BOLT	10-0707	1
11	HEX BOLT	10-0806	2
12	HEX BOLT	10-0402	4
13	HEX BOLT(6", 8" BEAM)	10-0203	4
14	HEX BOLT(10",12" BEAM)	10-0302	6
15	HEX NUT	11-0102	4
16	LOCK NUT	13-0040	2
17	HEX NUT	11-0090	2
18	HEX NUT	11-0060	4
19	HEX NUT	11-0030	4
20	HEX NUT	11-0040	6
21	LOCK WASHER	14-0009	2
22	LOCK WASHER	14-0005	4
23	LOCK WASHER	14-0003	4
24	LOCK WASHER	14-0004	6
25	BEVEL WASHER	16-0002	6
26	THRUST PLATE	36-0009	2

ORDERING REPAIR PARTS

When ordering repair parts from this manual, be sure to state the model and serial number of the unit. This information can be found on the small metal plate attached to the jib crane. The hardware kits are determined by the capacity of the jib crane.

SPANCO, INC.
BILL OF MATERIALS
WALL BRACKET (TIE ROD) JIB CRANE
MODEL 301 (300)

ITEM	DESCRIPTION	PART. NO.	QTY.
1	TOP PIVOT ASSY.	06-0467	1
2	BOTTOM PIVOT ASSY.	06-0471	1
3	BEAM BRACKET	06-0053 WLD	1
4	ROD CLEVIS	06-0531	2
5	WALL BRACKET	06-0523	2
6	END STOP (6",8" BEAM)	06-0310	4
6	END STOP (10", 12" BEAM)	06-0311	4
7	TIE ROD		1
8	BEAM		1
9	HEX BOLT	10-0905-301	1
10	HEX BOLT	10-0901	2
11	HEX BOLT	10-1001	2
12	HEX BOLT	10-0402	4
13	HEX BOLT(6", 8" BEAM)	10-0203	4
14	HEX BOLT(10",12" BEAM)	10-0303	6
15	HEX NUT	11-0102	4
16	LOCK NUT	13-0060	2
17	HEX NUT	11-0102	2
18	HEX NUT	11-0060	4
19	HEX NUT	11-0030	4
20	HEX NUT	11-0040	6
21	LOCK WASHER	14-0010	2
22	LOCK WASHER	14-0005	4
23	LOCK WASHER	14-0003	4
24	LOCK WASHER	14-0004	6
25	BEVEL WASHER	16-0002	6
26	THRUST PLATE	36-0010	2

ORDERING REPAIR PARTS

When ordering repair parts from this manual, be sure to state the model and serial number of the unit. This information can be found on the small metal plate attached to the jib crane. The hardware kits are determined by the capacity of the jib crane.

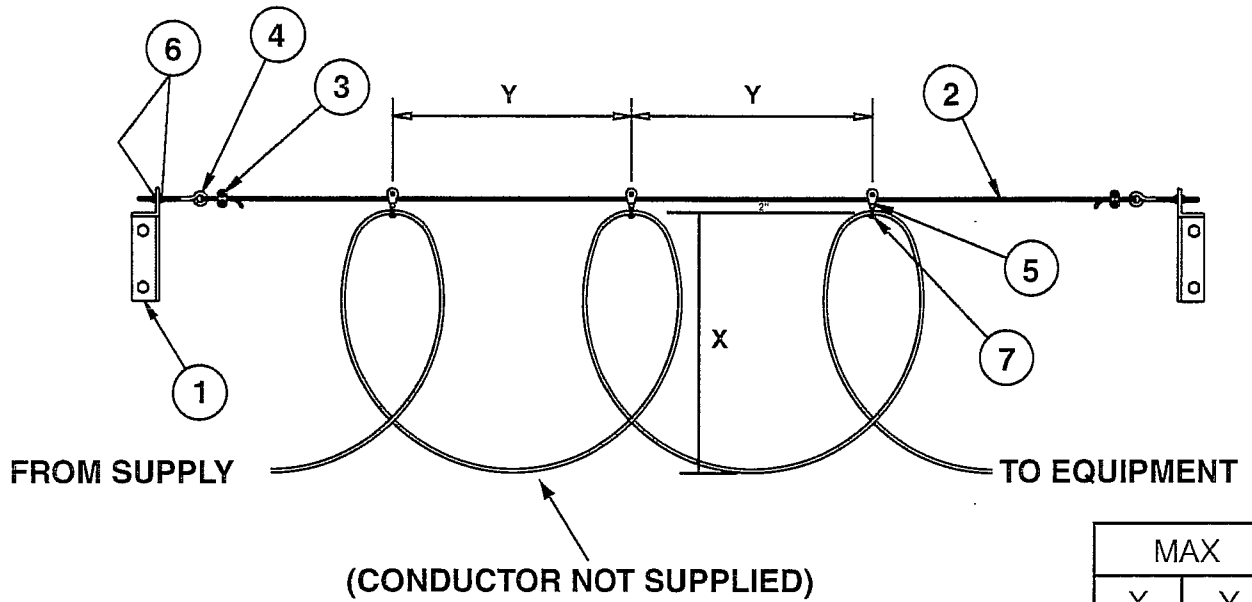
SPANCO, INC.
BILL OF MATERIALS
WALL BRACKET (TIE ROD) JIB CRANE
MODEL 301 (500)

ITEM	DESCRIPTION	PART. NO.	QTY.
1	TOP PIVOT ASSY.	06-0468	1
2	BOTTOM PIVOT ASSY.	06-0472	1
3	BEAM BRACKET	06-0541	1
4	ROD CLEVIS	06-0532	2
5	WALL BRACKET	06-0527	2
6	END STOP (15",18" , 20" BEAM)	06-0311	4
7	TIE ROD		1
8	BEAM		1
9	HEX BOLT	10-2001	1
10	HEX BOLT	10-2001	1
11	HEX BOLT	10-4001	2
12	HEX BOLT	10-0416	6
13	HEX BOLT(6", 8" BEAM)	10-0203	4
14	HEX BOLT(10",12" BEAM)	10-0404	10
15	HEX NUT	11-0105	4
16	LOCK NUT	13-0080	2
17	HEX NUT	11-0101	2
18	HEX NUT	11-0060	6
19	HEX NUT	11-0030	4
20	HEX NUT	11-0060	10
21	LOCK WASHER	14-0011	2
22	LOCK WASHER	14-0005	6
23	LOCK WASHER	14-0003	4
24	LOCK WASHER	14-0005	10
25	BEVEL WASHER	16-0002	10
26	THRUST PLATE	06-0508	2
27*	SHIM PLATE	06-3159	1

ORDERING REPAIR PARTS

When ordering repair parts from this manual, be sure to state the model and serial number of the unit. This information can be found on the small metal plate attached to the jib crane. The hardware kits are determined by the capacity of the jib crane.

TAG LINE SUPPORT SYSTEM



MAX	
X	Y
2 FT.	5 FT.

Bill of Material		
ITEM	DESCRIPTION	QTY.
7	CABLE TIES	*
6	HEX NUTS	4
5	PULLEYS	5
4	EYE BOLTS	2
3	CABLE CLAMPS	2
2	TAGLINE CABLE	1
1	TROLLEY STOPS	2
* QTY VARIES PER SPAN		



FIVE-YEAR EQUIPMENT WARRANTY

SPANCO offers this Equipment Warranty (the "Warranty") on the following equipment:

- Manually propelled Free Standing and Ceiling Mounted Workstation Bridge Cranes.
- Manually propelled Monorails.
- Manually propelled ALU-TRACK Bridge Cranes and Monorails.
- Manually rotated Enclosed Track and I-Beam Jib Cranes.
- Manually propelled Gantries.
- Manually propelled Articulating Jib Cranes
- ALL motorized SPANCO products come with a one year warranty on drive components

(the "Equipment"). SPANCO warrants the Equipment and wearable end truck and trolley wheels only, to be free from defects in material and workmanship for a period of five (5) years or 10,000 hours (whichever occurs first), commencing on the date of shipment to the first retail purchaser ("Purchaser"). This Warranty does not extend to Equipment which has been subject to misuse, use in excess of rated capacity, negligent operation, use beyond SPANCO's published service factors, improper installation or maintenance, and does not apply to any Equipment which has been repaired or altered without SPANCO's written authorization. Written notice of any claimed defect must be given to SPANCO within thirty (30) days after such defect is discovered. SPANCO's obligation, and Purchaser's sole remedy under this Warranty is limited to, at SPANCO's discretion, the replacement or repair of the Equipment at SPANCO's factory or at a location approved by SPANCO. Purchaser is responsible for all freight and transportation costs relating to the repair or replacement of the Equipment. **THE FOREGOING WARRANTY IS EXPRESSLY IN LIEU OF ALL OTHER WARRANTIES WHATSOEVER WHETHER EXPRESS, IMPLIED, OR STATUTORY. SELLER MAKES NO WARRANTY AS TO THE MERCHANTABILITY OR FITNESS FOR A PARTICULAR PURPOSE OF THE EQUIPMENT AND MAKES NO OTHER WARRANTY, EITHER EXPRESS OR IMPLIED.** SPANCO shall not be liable, under any circumstances, for any indirect, special or consequential damages including, but not limited to, lost profits, increased operating costs or loss of production. This Warranty shall not extend to any components or accessories not manufactured by SPANCO (such as casters), and Purchaser's remedy for such components and accessories shall be determined by the terms and conditions of any warranty provided by the manufacturer of such components and accessories.

All SPANCO design standards, as well as MMA standard "MH 27.2 Specifications for Enclosed Track Underhung Cranes and Monorail Systems", must be followed by anyone purchasing SPANCO components for the purpose of assembling and/or installing a complete crane or monorail system, not pre-engineered by SPANCO. ALL SPANCO COMPONENTS ARE SOLD AS IS. SPANCO DISCLAIMS AND DISAVOWS ANY AND ALL EXPRESS AND IMPLIED WARRANTIES, INCLUDING BUT NOT LIMITED TO THE IMPLIED WARRANTIES OF MERCHANTABILITY AND FITNESS FOR A PARTICULAR PURPOSE, IF BUYER FAILS TO INSTALL SPANCO COMPONENTS IN CONFORMITY WITH ALL SPANCO DESIGN STANDARDS, AS WELL AS MMA STANDARD "MH 27.2 SPECIFICATION FOR ENCLOSED TRACK UNDERHUNG CRANES AND MONORAIL SYSTEMS". TO THE EXTENT BUYER SUFFERS ANY LOSS DUE TO THE FAILURE OF ANY SPANCO COMPONENTS, BUYER AGREES THAT ANY RECOVERY IS LIMITED TO THE VALUE OF THE REPLACEMENT OF SAID COMPONENT. BUYER AGREES TO WAIVE THE RIGHT TO A JURY TRIAL AND FURTHER CONSENTS TO THE JURISDICTION OF THE BERKS COUNTY COURT OF COMMON PLEAS, READING, PENNSYLVANIA. PENNSYLVANIA STATE LAW SHALL GOVERN ALL DISPUTES PERTAINING TO SPANCO COMPONENTS.



SERVICE POLICY

1. Obtain as much information as possible concerning the problem through personal observation by yourself or other authorized personnel familiar with the job and equipment: include model, serial and/or part numbers, voltages, speeds and any other special identifying features. Be prepared to discuss the situation in detail.
2. All authorized labor charges will be based on straight time. Hourly rates, estimated man hours, and not to exceed total dollar amount required for corrections are to be agreed upon before authorization is given. There will be no allowances for overtime except in dire emergencies and then only with prior approval.
3. A verbal agreement may be reached immediately on both the method of correction and the approximate cost. A warranty authorization number will be assigned for the specific incident. A confirming written authorization will be forwarded to the distributor.
4. The distributor must send an itemized invoice, showing our release number or invoice number and warranty authorization number after authorized corrections have been made. A credit memo will be issued by accounting after the invoice has been received and approved. Warranty charges ARE NOT to be deducted from outstanding open account invoices under any circumstances.
5. Any field corrections made prior to an authorization by SPANCO will not be accepted as a warranty charge or the responsibility of SPANCO. Any modification to the equipment made without the prior approval of the seller will void all warranties. A verbal authorization for modification may be obtained, in which event a warranty authorization number will be assigned for the specific modification. A confirming written authorization will be forwarded to the distributor.

This warranty and service policy will be incorporated as a permanent section of the current price book as issued by SPANCO.

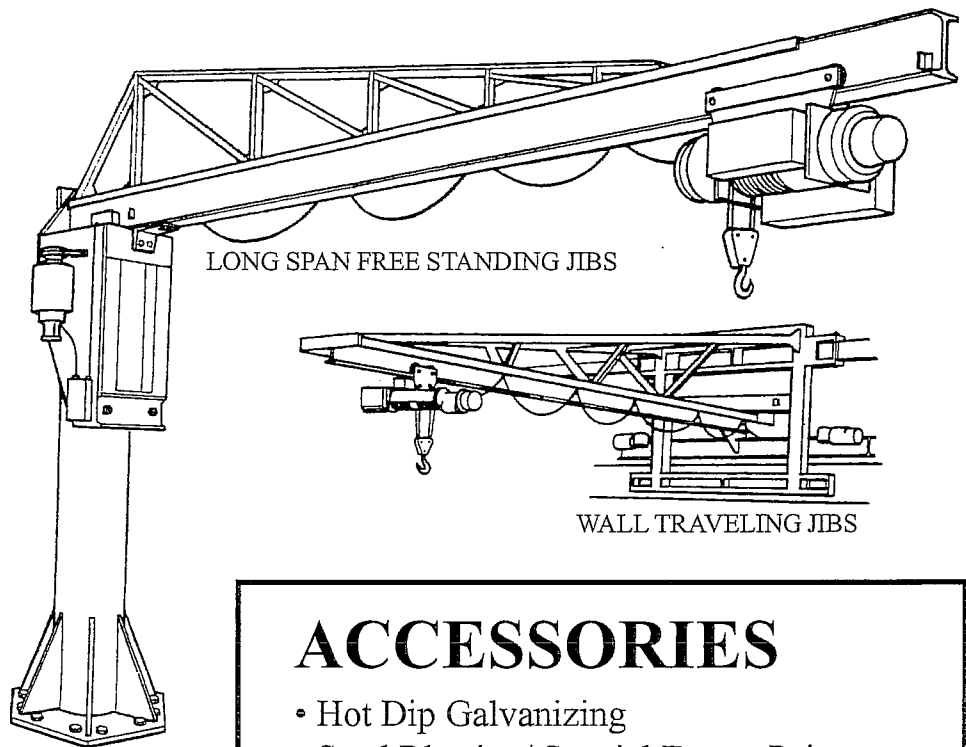
SPANCO[®] JIB CRANES

THE FIRST NAME IN JIBS...

Thousands of Standard Models • Custom Design Specialists

FEATURES:

- Capacities to 15 tons
- Spans to 40 feet
- Manual, electric, or natural gas powered rotation of all styles
- 200° or 360° boom rotation
- Standard American I-Beams
- Heavy wall pillars
- Safety Yellow Paint



For more info, check us out on the web at:

www.spanco.com



ACCESSORIES

- Hot Dip Galvanizing
- Sand Blasting/ Special Epoxy Paints
- 360° Electrification
- Flat and Round Wire Festoning Systems
- Mast Wear Strips
- Single and Multi-Position Boom Locks
- Friction Boom Locks (Drag Brake)
- Anchor Bolts and Templates for Base Plate Models
- Fusible Disconnect Switches
- Manual Rotation Stops for All Styles



604 Hemlock Road
Morgantown, PA 19543

PH 1-800-869-2080

PH (610) 286-7200 FAX (610)-286-0085