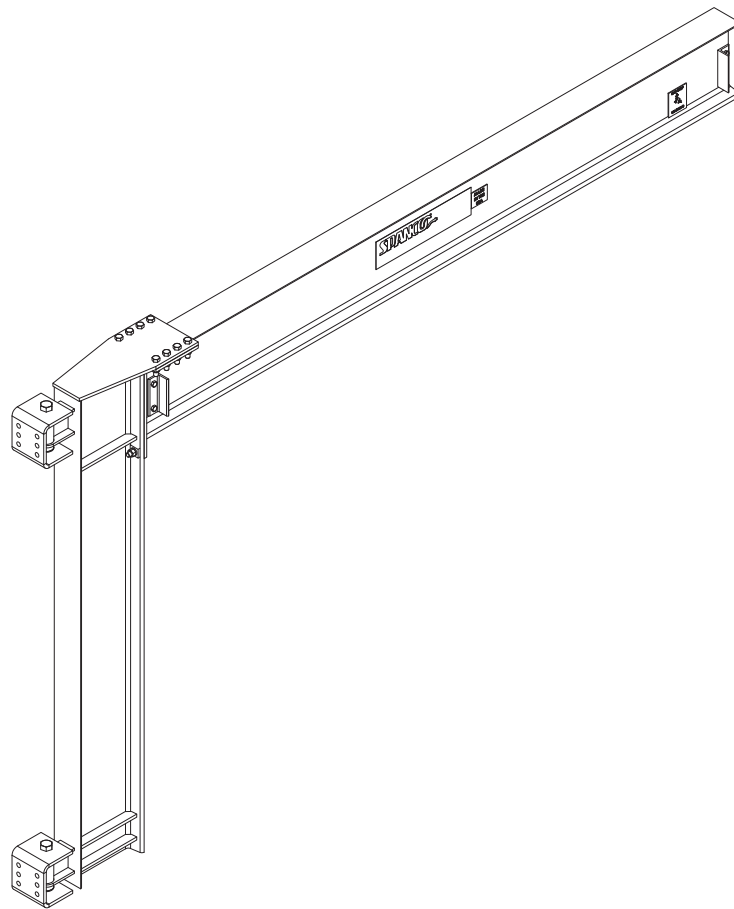




## Spare Parts, Instruction and Maintenance Manual for SPANCO® Model 300 Jib Cranes





## TABLE OF CONTENTS

|                                      |    |
|--------------------------------------|----|
| Forward.....                         | 2  |
| Installation.....                    | 3  |
| Maintenance.....                     | 5  |
| Dimensions Sheet SD-06-18.....       | 6  |
| Dimensions Sheet SD-06-19.....       | 7  |
| Dimensions Sheet SD-06-22.....       | 8  |
| Dimensions Sheet SD-06-20.....       | 10 |
| Bill of Materials Diagram.....       | 11 |
| Bill of Materials.....               | 12 |
| Tag Line Support System Diagram..... | 13 |
| Warranty and Service Policy.....     | 16 |

## **FORWARD:**

This manual contains important information to help you install, operate, maintain, and service your new jib crane. We recommend that you study its contents thoroughly before putting the jib into use. We also recommend that you obtain the latest issue of ANSI B30.11 Safety Standard for Monorails and Underhung Cranes and study its contents thoroughly. By practicing the recommended maintenance, with proper installation, and application of correct operating procedures, you will be assured maximum service from your jib crane.

**The jibs described in this manual are intended for indoor service. Jib cranes used for outdoor service require special consideration.**

## **INSTALLATION:**

Before attempting to install your new jib crane, the following items must be understood...

1. It is the customer's responsibility to ensure that building columns or walls are adequate to support the crane including the hoist, rated load, and impact factor as outlined in the ANSI B30.11.
2. Jib cranes should not be hung from an existing building structure without first consulting a qualified architect or engineer for the purpose of determining the structure's adequacy.

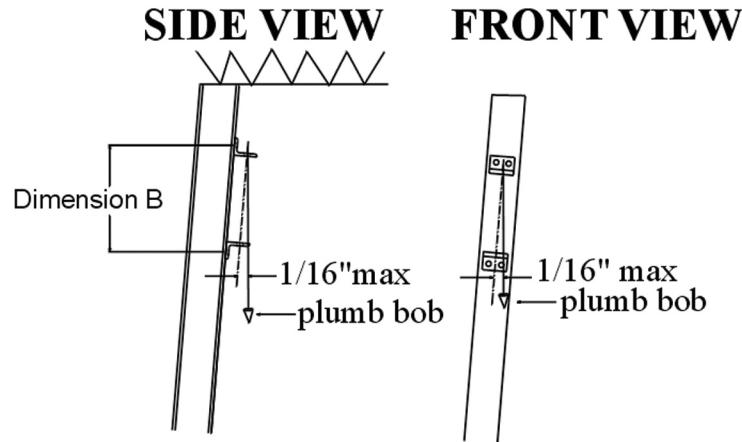


**NOTE: DO NOT MOUNT THE JIB CRANE TO ANY STRUCTURE UNLESS YOU ARE SURE THE STRUCTURE CAN SAFELY SUPPORT THE LOADS IMPOSED UPON THE STRUCTURE. FAILURE TO CHECK THIS ITEM CAN RESULT IN SEVERE BODILY INJURY OR DEATH.**

3. The installer is responsible for supplying the correct size, length, number, and type of bolts required to attach the jib crane brackets to the structure. SPANCO recommends that the bolts be ASTM A325 grade.
4. Plan the installation such that the proper clearance as outlined in ANSI B30.11 will be adhered to. In the design of jib crane systems, all factors that influence clearances, such as wheel float, roof truss sag, and boom deflection shall be considered. To compensate for anticipated deflection, the boom tip should be adjusted to an elevation equal to  $\text{Boom Length (inches)} \div 300$  above level.

**After these points have been covered, you may begin the installation procedure as follows:**

1. Refer to the assembly drawings in this manual and locate the dimensions of the specific model 300 jib crane to be installed.
2. Determine the elevation of the top wall bracket by adding the dimensions listed in the charts to the desired elevation of the bottom of the boom.
3. Hold the top wall bracket against the supporting column in its proper location with a C-clamp or other supporting method.
4. Establish the correct distance from the top wall bracket to the bottom wall bracket. Hold the bottom wall bracket against the supporting column with a C-clamp or other supporting method.
5. Use a plumb bob to check the alignment of the bottom bracket with the top bracket in two planes. The alignment must be within 1/16 inches from top to bottom.



6. Using the wall brackets as a template, mark the established hole locations.
7. Drill the holes in the column for the wall brackets.
8. Mount the wall brackets and their shims (if used) to the column with bolts supplied by the installer. Care should be taken to insure all bolts are properly tightened.
9. Lift the jib assembly with its bearings attached with a lift truck, or other means, into place. Insert the hex head bolt through the bracket. Insure the thrust plate is properly located at the bottom of each bearing. Install the lock washer and hex nut onto the bolts. Tighten the nut to the torque listed:

|   | CRANE CAPACITY | BOLT SIZE | TORQUE ON NUT |
|---|----------------|-----------|---------------|
| <b>PIVOT<br/>BOLT<br/>TORQUE<br/>ONLY</b> | 1/4 - 1 TON    | 1"        | 40 FT-lbs.    |
|   | 1 1/2 - 2 TON  | 1 1/4"    | 75 FT-lbs.    |
|   | 3 TON          | 1 1/2"    | 70 FT-lbs.    |
|   | 4 - 5 TON      | 2 1/4"    | 57 FT-lbs.    |

10. Remove the end stop angles from the boom tip and install the hoist and trolley onto the boom. Refer to the hoist manufacturer's manual for proper setting of the trolley wheels to match the boom beam. Remember to reinstall the end stop angles on the boom and properly tighten the nuts.
11. Connect the hoist to its source of power (either air or electric) if required, as per the hoist manufacturer's manual.
12. Now that the jib crane installation is complete, but before the unit is placed into service, it is important to review and follow procedures outlined in Chapter 11-2 of ANSI B30.11 regarding inspection, testing, and maintenance.

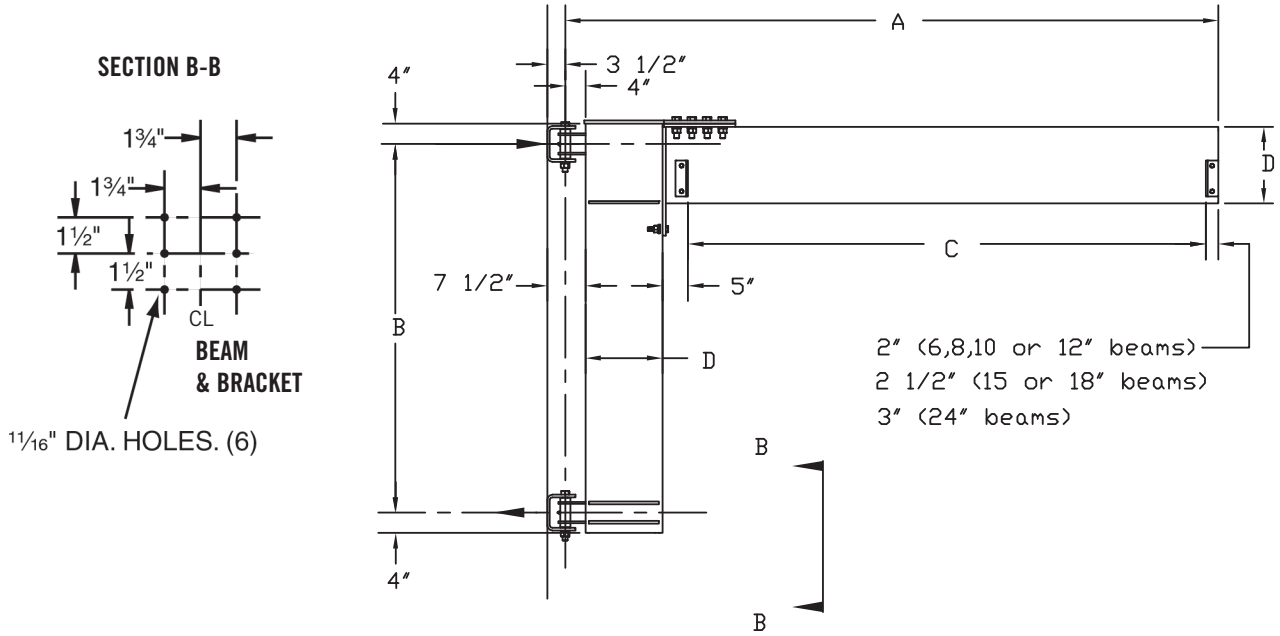
|   | <b>FASTENER SIZE</b> | <b>TORQUE FT. LBS.</b> |
|---|----------------------|------------------------|
| <b>STRUCTURAL<br/>BOLT<br/>ONLY<br/>(NOT PIVOT BOLTS)</b> | 1/4"                 | 10 FT. LBS.            |
|   | 5/16"                | 19 FT. LBS.            |
|   | 3/8"                 | 33 FT. LBS.            |
|   | 7/16"                | 54 FT. LBS.            |
|   | 1/2"                 | 78 FT. LBS.            |
|   | 9/16"                | 114 FT. LBS.           |
|   | 5/8"                 | 154 FT. LBS.           |
|   | 3/4"                 | 257 FT. LBS.           |
|   | 7/8"                 | 341 FT. LBS.           |
|   | 1"                   | 514 FT. LBS.           |
|   | 1 1/4"               | 803 FT. LBS.           |

**MAINTENANCE:**

By definition, the term "jib crane" includes the jib, the trolley, and the hoist, along with any attachment that may exist. The user should refer to the manual supplied with the hoist and trolley for a listing of maintenance points and their suggested frequency.

With regards to the SPANCO jib, the only maintenance item is that of the wall bracket lubrication. The sleeve bearings in those brackets are pre-lubricated at the factory. Field lubrication of those bearings is required based upon usage of the crane. SPANCO recommends that the bearings be lubricated at least once a year. The grease should be a lithium soap based grease, consistency No. NLGI 2.

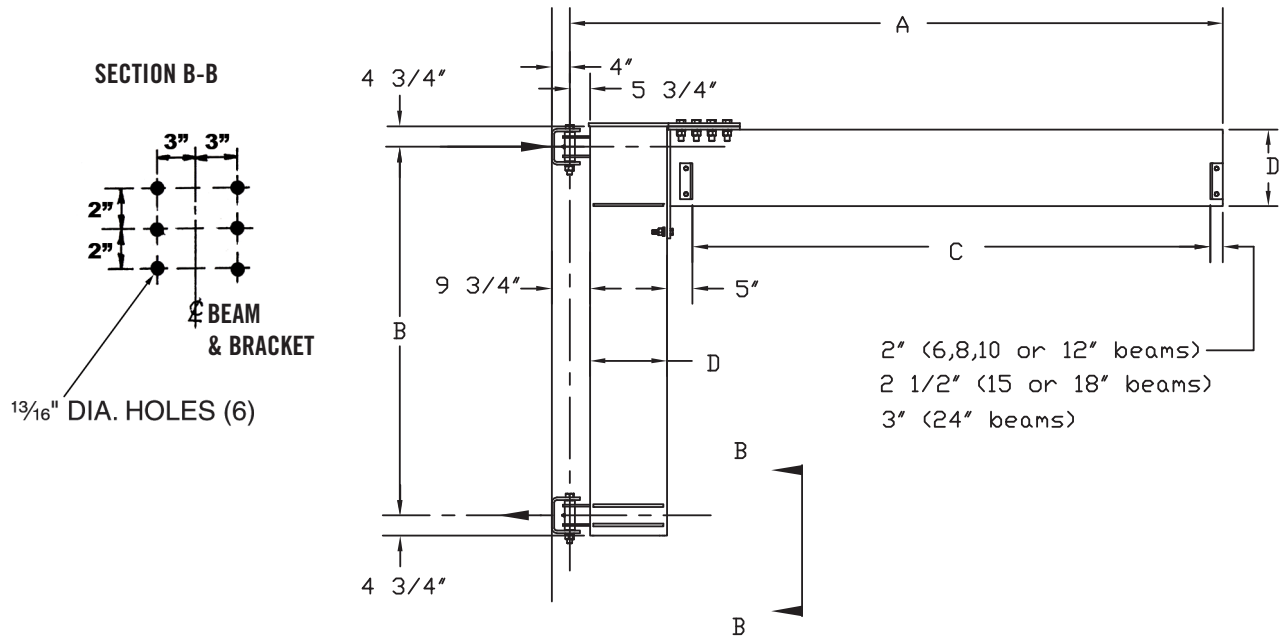
WALL CANTILEVER JIB CRANE 200° ROTATION MODEL 300 -  -



|                |          |                 |        |         |         |         |         |            |            |
|----------------|----------|-----------------|--------|---------|---------|---------|---------|------------|------------|
| <b>1/4 TON</b> | <b>A</b> | Span            | 8      | 10      | 12      | 14      | 16      | 18         | 20         |
|                | <b>B</b> | Bracket Centers | 4'-0"  | 4'-0"   | 4'-0"   | 4'-0"   | 4'-0"   | 4'-0"      | 4'-0"      |
|                | <b>C</b> | Clear Span      | 6'-7"  | 8'-7"   | 10'-7"  | 12'-7"  | 14'-5"  | 16'-5"     | 18'-3"     |
|                | <b>D</b> | Beam Wgt./Ft.   | 6-12.5 | 6-12.5  | 6-12.5  | 6-12.5  | 8-18.4  | 8-18.4     | 10-25.4    |
| <b>1/2 TON</b> | <b>A</b> | Span            | 8      | 10      | 12      | 14      | 16      | 18         | 20         |
|                | <b>B</b> | Bracket Centers | 4'-0"  | 4'-0"   | 4'-0"   | 4'-0"   | 4'-0"   | 4'-0"      | 6'-0"      |
|                | <b>C</b> | Clear Span      | 6'-5"  | 8'-5"   | 10'-5"  | 12'-5"  | 14'-3"  | 16'-3"     | 18'-1"     |
|                | <b>D</b> | Beam Wgt./Ft.   | 8-18.4 | 8-18.4  | 8-18.4  | 8-18.4  | 10-25.4 | 10-25.4    | 12-31.8    |
| <b>1 TON</b>   | <b>A</b> | Span            | 8      | 10      | 12      | 14      | 16      | 18         | 20         |
|                | <b>B</b> | Bracket Centers | 4'-0"  | 5'-0"   | 5'-0"   | 5'-0"   | 6'-0"   | 6'-0"      | 6'-0"      |
|                | <b>C</b> | Clear Span      | 6'-5"  | 8'-3"   | 10'-3"  | 12'-3"  | 14'-1"  | 15'-9 1/2" | 17'-9 1/2" |
|                | <b>D</b> | Beam Wgt./Ft.   | 8-18.4 | 10-25.4 | 10-25.4 | 10-25.4 | 12-31.8 | 15-42.9    | 15-42.9    |

DIM SHEET SD-06-18

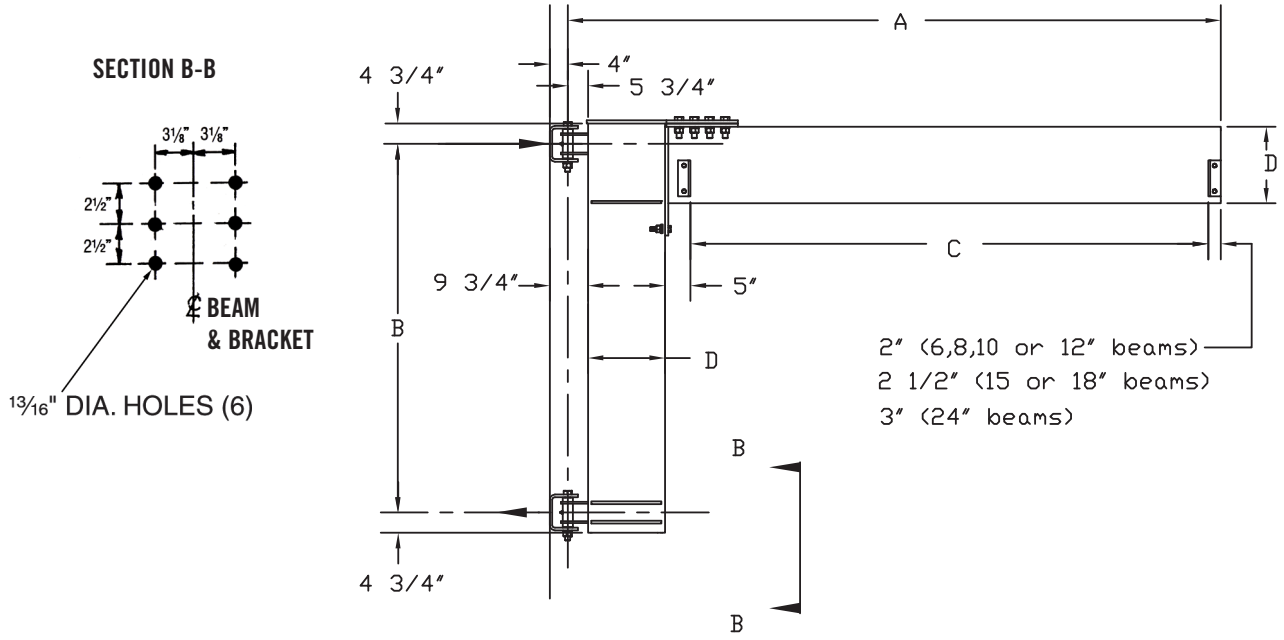
WALL CANTILEVER JIB CRANE 200° ROTATION MODEL 300 -  -



|              |   |                 |            |            |            |             |            |            |             |
|--------------|---|-----------------|------------|------------|------------|-------------|------------|------------|-------------|
| 1 1/2<br>TON | A | Span            | 8          | 10         | 12         | 14          | 16         | 18         | 20          |
|              | B | Bracket Centers | 4'-0"      | 4'-0"      | 4'-0"      | 4'-0"       | 5'-0"      | 6'-0"      | 6'-0"       |
|              | C | Clear Span      | 6'-1 1/4"  | 8'-1 1/4"  | 9'-11 1/4" | 11'-11 1/4" | 13'-7 3/4" | 15'-4 3/4" | 17'-4 3/4"  |
|              | D | Beam Wgt./Ft.   | 10-25.4    | 10-25.4    | 12-31.8    | 12-31.8     | 15-42.9    | 18-54.7    | 18-54.7     |
| 2<br>TON     | A | Span            | 8          | 10         | 12         | 14          | 16         | 18         | 20          |
|              | B | Bracket Centers | 4'-0"      | 4'-0"      | 4'-0"      | 5'-0"       | 6'-0"      | 6'-0"      | 6'-6"       |
|              | C | Clear Span      | 5'-11 1/4" | 7'-11 1/4" | 9'-11 1/4" | 11'-7 3/4"  | 13'-4 3/4" | 15'-4 3/4" | 16'-10 1/4" |
|              | D | Beam Wgt./Ft.   | 12-31.8    | 12-31.8    | 12-31.8    | 15-42.9     | 18-54.7    | 18-54.7    | 24-80       |

DIM SHEET SD-06-19

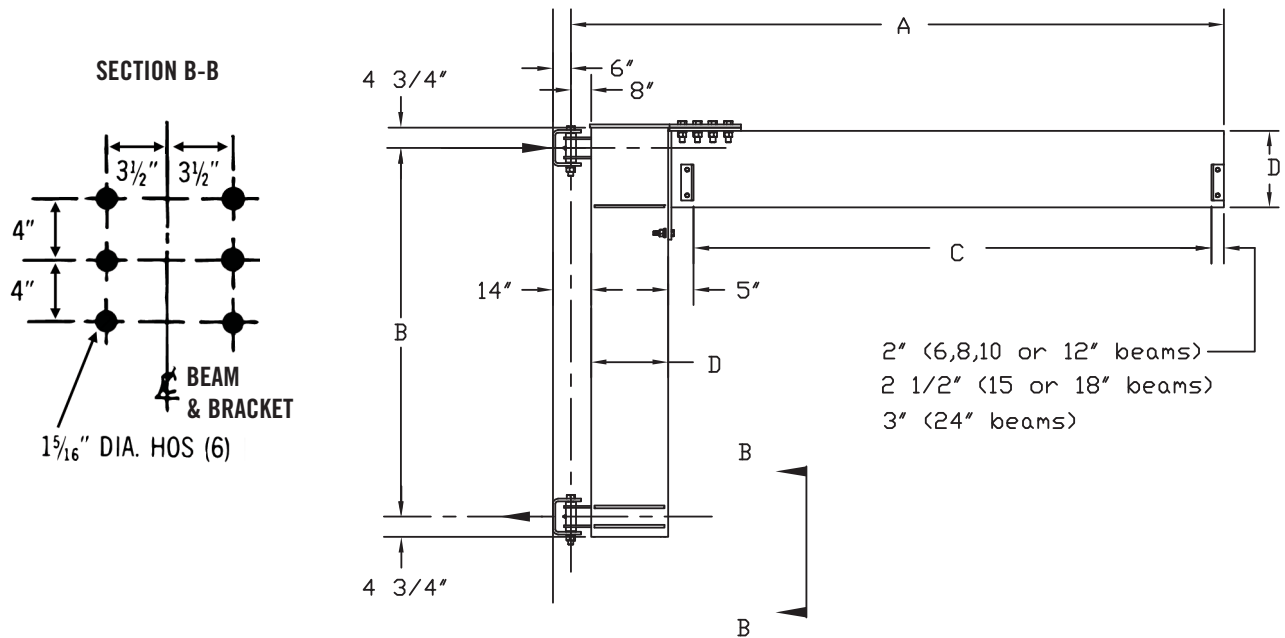
**WALL CANTILEVER JIB CRANE 200° ROTATION MODEL 300 -  -**



|                  |          |                    |           |           |           |            |            |             |             |
|------------------|----------|--------------------|-----------|-----------|-----------|------------|------------|-------------|-------------|
| <b>3<br/>TON</b> | <b>A</b> | Span               | 8         | 10        | 12        | 14         | 16         | 18          | 20          |
|                  | <b>B</b> | Bracket<br>Centers | 4'-0"     | 4'-0"     | 6'-0"     | 6'-0"      | 6'-6"      | 7'-6"       | 9'-6"       |
|                  | <b>C</b> | Clear<br>Span      | 5'-7 3/4" | 7'-7 3/4" | 9'-7 3/4" | 11'-7 3/4" | 13'-4 3/4" | 14'-10 1/4" | 14'-10 1/4" |
|                  | <b>D</b> | Beam<br>Wgt./Ft.   | 15-42.9   | 15-42.9   | 15-42.9   | 15-42.9    | 18-54.7    | 24-80       | 24-80       |

DIM SHEET SD-06-22

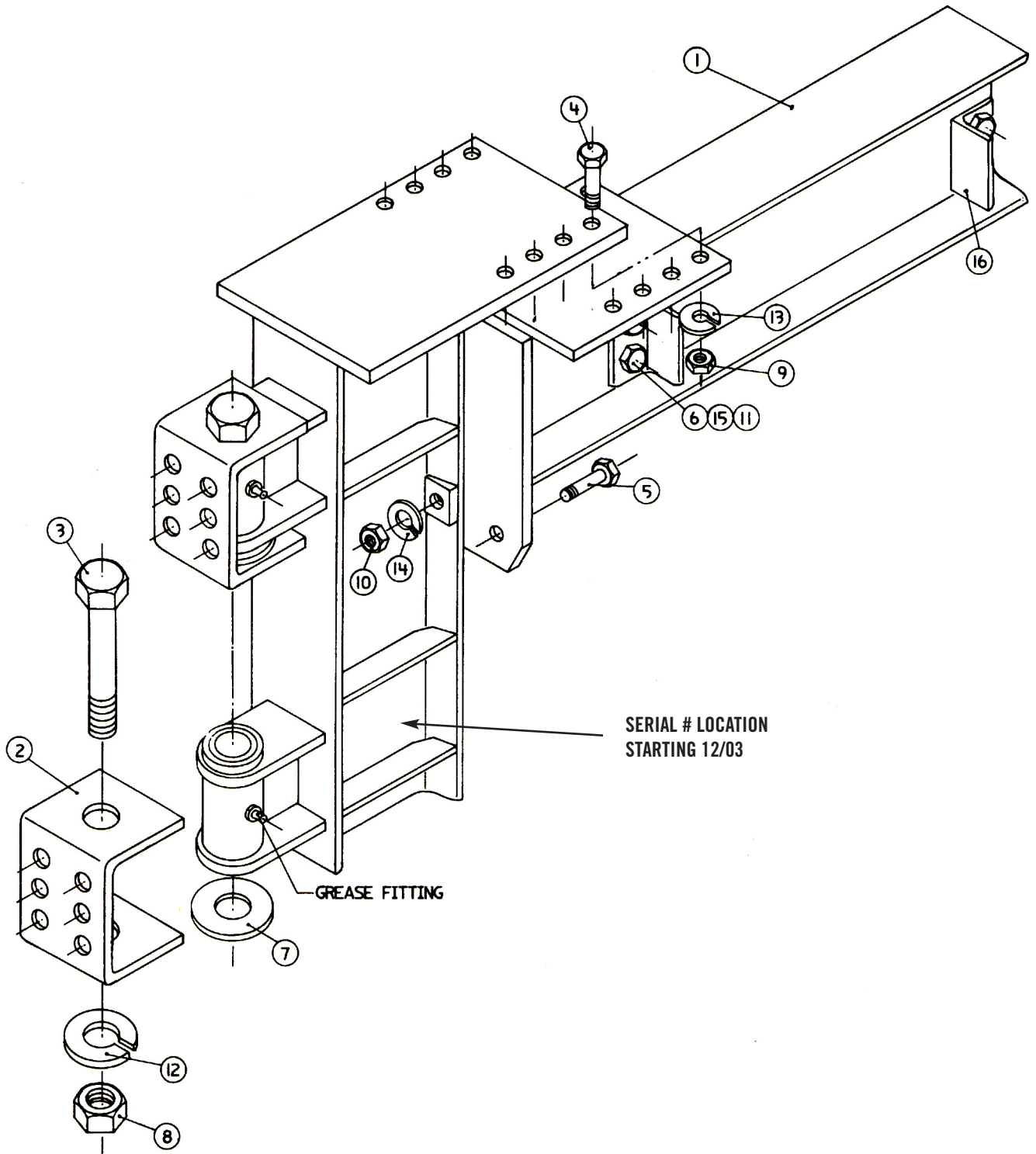
WALL CANTILEVER JIB CRANE 200° ROTATION MODEL 300 -  -



|          |   |                 |           |           |           |            |        |        |        |
|----------|---|-----------------|-----------|-----------|-----------|------------|--------|--------|--------|
| 4<br>TON | A | Span            | 8         | 10        | 12        | 14         | 16     | 18     | 20     |
|          | B | Bracket Centers | 4'-0"     | 6'-6"     | 6'-6"     | 6'-6"      | 7'-6"  | 9'-6"  | 9'-6"  |
|          | C | Clear Span      | 5'-5 1/2" | 7'-2 1/2" | 9'-2 1/2" | 11'-2 1/2" | 12'-8" | 14'-8" | 16'-8" |
|          | D | Beam Wgt./Ft.   | 15-42.9   | 18-54.7   | 18-54.7   | 18-54.7    | 24-80  | 24-80  | 24-80  |
| 5<br>TON | A | Span            | 8         | 10        | 12        | 14         | 16     | 18     | 20     |
|          | B | Bracket Centers | 6'-6"     | 6'-6"     | 6'-6"     | 7'-6"      | 9'-6"  | 9'-6"  | 9'-6"  |
|          | C | Clear Span      | 5'-2 1/2" | 7'-2 1/2" | 9'-2 1/2" | 10'-8"     | 12'-8" | 14'-8" | 16'-8" |
|          | D | Beam Wgt./Ft.   | 18-54.7   | 18-54.7   | 18-54.7   | 24-80      | 24-80  | 24-80  | 24-80  |

DIM SHEET SD-06-20

**BILL OF MATERIALS DIAGRAM WALL CANTILEVER JIB CRANES:**



**BILL OF MATERIALS DIAGRAM  
WALL CANTILEVER JIB CRANES:**

**IMPORTANT:**

All hardware for crane must be grade 5 or A325.

Ordering Repair Parts:

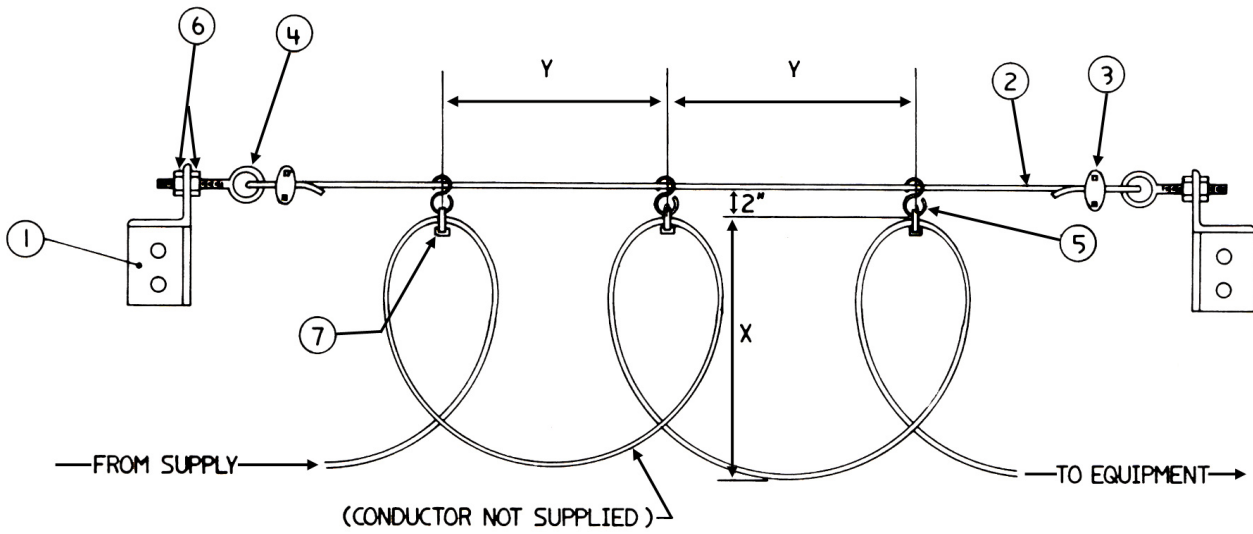
When ordering repair parts from this manual, be sure to state the model and serial numbers of the unit. This information can be found on the small metal plate attached to the jib crane.

The hardware kits are determined by the capacity and beam size of the crane.

| ITEM                              | DESCRIPTION                     | PART #   | QTY. |
|-----------------------------------|---------------------------------|----------|------|
| <b>1/4, 1/2, and 1 TON CRANES</b> |                                 |          |      |
| 3                                 | Hex bolt, 1", 8NC, 9" long      | 10-0604  | 2    |
| 7                                 | Thrust washer, 1"               | 36-0008  | 2    |
| 8                                 | Hex Nut, 1", 8NC                | 11-0080  | 2    |
| 12                                | Lockwasher, 1"                  | 14-0007  | 2    |
| <b>1 1/2 and 2 TON CRANES</b>     |                                 |          |      |
| 3                                 | Hex bolt, 1 1/4", 7NC, 10" long | 10-0606  | 2    |
| 7                                 | Thrust washer, 1 1/4"           | 36-0009  | 2    |
| 8                                 | Hex Nut, 1 1/4", 8NC            | 11-0090  | 2    |
| 12                                | Lockwasher, 1 1/4"              | 14-0009  | 2    |
| <b>3 TON CRANES</b>               |                                 |          |      |
| 3                                 | Bolt, 1 1/2", 6NC, 12" long     | 10-1001M | 2    |
| 7                                 | Thrust washer, 1 1/2"           | 36-0010  | 2    |
| 8                                 | Hex Nut, 1 1/2", 6NC            | 11-0102  | 2    |
| 12                                | Lockwasher, 1 1/2"              | 14-0010  | 2    |
| <b>4 and 5 TON CRANES</b>         |                                 |          |      |
| 3                                 | Bolt, 2 1/4", 4.5NC, 18" long   | 10-4001M | 2    |
| 7                                 | Thrust washer, 2 1/4"           | 06-0508  | 2    |
| 8                                 | Hex Nut, 2 1/4", 4.5NC          | 11-0101  | 2    |
| 12                                | Lockwasher, 2 1/4"              | 14-0011  | 2    |

| ITEM                           | DESCRIPTION                       | PART #  | QTY. |
|--------------------------------|-----------------------------------|---------|------|
| <b>S6 and S8 BEAM CRANES</b>   |                                   |         |      |
| 4                              | Hex bolt, 1/2", 13NC, 2" long     | 10-0203 | 6    |
| 5                              | Hex bolt, 5/8", 11NC, 2 1/2" long | 10-0302 | 2    |
| 6                              | Hex bolt, 1/2", 13NC, 1 1/2" long | 10-0202 | 4    |
| 9                              | Hex nut, 1/2", 13NC               | 11-0030 | 6    |
| 10                             | Hex nut, 5/8", 11NC               | 11-0040 | 2    |
| 11                             | Hex nut, 1/2", 13NC               | 11-0030 | 4    |
| 13                             | Lockwasher, 1/2"                  | 14-0003 | 6    |
| 14                             | Lockwasher, 5/8"                  | 14-0004 | 2    |
| 15                             | Lockwasher, 1/2"                  | 14-0003 | 4    |
| <b>S10 and S12 Beam Cranes</b> |                                   |         |      |
| 4                              | Hex bolt, 5/8", 11NC, 2 1/2" long | 10-0302 | 8    |
| 5                              | Hex bolt, 5/8", 11NC, 2 1/2" long | 10-0302 | 2    |
| 6                              | Hex bolt, 1/2", 13NC, 1 1/2" long | 10-0202 | 4    |
| 9                              | Hex nut, 5/8", 11NC               | 11-0040 | 8    |
| 10                             | Hex nut, 5/8", 11NC               | 11-0040 | 2    |
| 11                             | Hex nut, 1/2", 13NC               | 11-0030 | 4    |
| 13                             | Lockwasher, 5/8"                  | 14-0004 | 8    |
| 14                             | Lockwasher, 5/8"                  | 14-0004 | 2    |
| 15                             | Lockwasher, 1/2"                  | 14-0003 | 4    |
| <b>S15 and S18 Beam Cranes</b> |                                   |         |      |
| 4                              | Hex bolt, 1", 8NC, 3 1/2" long    | 10-0608 | 8    |
| 5                              | Hex bolt, 3/4", 10NC, 3 1/2" long | 10-0404 | 2    |
| 6                              | Hex bolt, 1/2", 13NC, 2" long     | 10-0203 | 4    |
| 9                              | Hex nut, 1", 8NC                  | 11-0080 | 8    |
| 10                             | Hex nut, 3/4", 11NC               | 11-0060 | 2    |
| 11                             | Hex nut, 1/2", 13NC               | 11-0030 | 4    |
| 13                             | Lockwasher, 1"                    | 14-0007 | 8    |
| 14                             | Lockwasher, 3 1/4"                | 14-0005 | 2    |
| 15                             | Lockwasher, 1/2"                  | 14-0003 | 4    |
| <b>S24 BEAM CRANES</b>         |                                   |         |      |
| 4                              | Hex bolt, 1 1/4", 9NC, 4" long    | 10-0808 | 8    |
| 5                              | Hex bolt, 3/4", 10NC, 3 1/2" long | 10-0404 | 2    |
| 6                              | Lockwasher, 1/2"                  | 14-0003 | 4    |
| 9                              | Hex nut, 1 1/4", 7NC              | 11-0090 | 8    |
| 10                             | Hex nut, 3/4", 10NC               | 11-0060 | 2    |
| 11                             | Hex nut, 1/2", 13NC               | 11-0030 | 4    |
| 13                             | Lockwasher, 3/4"                  | 14-0009 | 8    |
| 14                             | Lockwasher, 3/4"                  | 14-0005 | 2    |
| 15                             | Hex bolt, 1/2", 13NC, 2 1/2" long | 14-0003 | 4    |

**BILL OF MATERIALS TAG LINE SUPPORT SYSTEM:**



| ITEM | DESCRIPTION   | QTY. |
|------|---------------|------|
| 7    | Cable ties    | 5    |
| 6    | Hex nuts      | 4    |
| 5    | S-hooks       | 5    |
| 4    | Eyebolts      | 2    |
| 3    | Cable clamps  | 2    |
| 2    | Tagline cable | 1    |
| 1    | Trolley stops | 2    |

|       |       |
|-------|-------|
| X     | Y     |
|       | MAX   |
| 2 FT. | 5 FT. |







**SPANCO, Inc.**  
604 Hemlock Road  
Morgantown, PA, 19543

Toll Free: (800) 869-2080  
Local: (610) 286-7200  
Fax: (610) 286-0085

[spanco.com](http://spanco.com)

## **FIVE-YEAR EQUIPMENT WARRANTY**

SPANCO offers this Equipment Warranty (the "Warranty") on the following equipment:

- Manually propelled Free Standing and Ceiling Mounted Workstation Bridge Cranes.
- Manually propelled Monorails.
- Manually propelled ALU-TRACK Bridge Cranes and Monorails.
- Manually rotated Enclosed Track and I-Beam Jib Cranes.
- Manually propelled Gantries.
- Manually propelled Articulating Jib Cranes.
- ALL motorized SPANCO products come with a one year warranty on drive components.

SPANCO warrants the Equipment and wearable end truck and trolley wheels only, to be free from defects in material and workmanship for a period of five (5) years or 10,000 hours (whichever occurs first), commencing on the date of shipment to the first retail purchaser ("Purchaser"). This Warranty does not extend to Equipment which has been subject to misuse, use in excess of rated capacity, negligent operation, use beyond SPANCO's published service factors, improper installation or maintenance, and does not apply to any Equipment which has been repaired or altered without SPANCO's written authorization. Written notice of any claimed defect must be given to SPANCO within thirty (30) days after such defect is discovered. SPANCO's obligation, and Purchaser's sole remedy under this Warranty is limited to, at SPANCO's discretion, the replacement or repair of the Equipment at SPANCO's factory or at a location approved by SPANCO. Purchaser is responsible for all freight and transportation costs relating to the repair or replacement of the Equipment. THE FOREGOING WARRANTY IS EXPRESSLY IN LIEU OF ALL OTHER WARRANTIES WHATSOEVER WHETHER EXPRESS, IMPLIED, OR STATUTORY. SELLER MAKES NO WARRANTY AS TO THE MERCHANTABILITY OR FITNESS FOR A PARTICULAR PURPOSE OF THE EQUIPMENT AND MAKES NO OTHER WARRANTY, EITHER EXPRESS OR IMPLIED. SPANCO shall not be liable, under any circumstances, for any indirect, special or consequential damages including, but not limited to, lost profits, increased operating costs or loss of production. This Warranty shall not extend to any components or accessories not manufactured by SPANCO (such as casters), and Purchaser's remedy for such components and accessories shall be determined by the terms and conditions of any warranty provided by the manufacturer of such components and accessories.

## **SERVICE POLICY**

1. Obtain as much information as possible concerning the problem through personal observation by yourself or other authorized personnel familiar with the job and equipment: include model, serial and/or part numbers, voltages, speeds and any other special identifying features. Be prepared to discuss the situation in detail.
2. All authorized labor charges will be based on straight time. Hourly rates, estimated man hours, and not to exceed total dollar amount required for corrections are to be agreed upon before authorization is given. There will be no allowances for overtime except in dire emergencies and then only with prior approval.
3. A verbal agreement may be reached immediately on both the method of correction and the approximate cost. A warranty authorization number will be assigned for the specific incident. A confirming written authorization will be forwarded to the distributor.
4. The distributor must send an itemized invoice, showing our release number or invoice number and warranty authorization number after authorized corrections have been made. A credit memo will be issued by accounting after the invoice has been received and approved. Warranty charges ARE NOT to be deducted from outstanding open account invoices under any circumstances.
5. Any field corrections made prior to an authorization by SPANCO will not be accepted as a warranty charge or the responsibility of SPANCO. Any modification to the equipment made without the prior approval of the seller will void all warranties. A verbal authorization for modification may be obtained, in which event a warranty authorization number will be assigned for the specific modification. A confirming written authorization will be forwarded to the distributor.

This warranty and service policy will be incorporated as a permanent section of the current price book as issued by SPANCO.