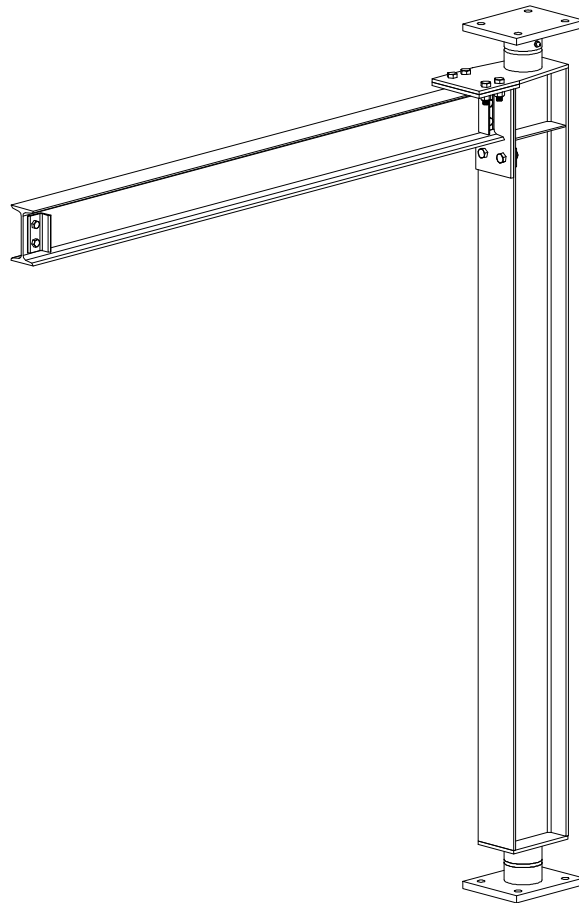




Installation Instruction and Parts Manual  
For Models 200 and 201 Jib Cranes



**Morgantown Business Park, 604 Hemlock Road Morgantown, PA 19543**  
**Phone: (800) 869-2080 / Fax: (610) 286-0085**

# TABLE OF CONTENTS

Forward.....	2
Mast Installation.....	3
Boom Installation.....	4
Acceptance Test.....	4
Maintenance.....	4
Dimensions.....	6-7
Warranty and Service Policy.....	8

## **FORWARD:**

This manual contains important information to help you install, operate, maintain, and service your new mast type jib crane. We recommend that you study its contents thoroughly before putting the jib into use. We also recommend that you obtain the latest issue of *ANSI B30.11 Safety Standard For Monorails and Underhung Cranes* and study its contents thoroughly. By practicing the recommended maintenance suggestions, with proper installation, and application of correct operating procedures you will be assured maximum service from your jib crane.

The jibs described in this manual are intended for indoor service. Jib cranes used for outdoor service require special consideration.

Information contained in this manual is subject to change without notice.



**This equipment is NOT, in any way, designed for lifting, supporting, or transporting humans. Failure to follow the specified load and mounting limitations can result in serious bodily injury and/or property damage.**

**IT IS SOLELY THE CUSTOMER'S RESPONSIBILITY TO PROVIDE SUITABLE MOUNTING SUPPORTS FOR THE JIB CRANE. SPANCO RECOMMENDS THAT THE CUSTOMER CONSULT A QUALIFIED PROFESSIONAL ARCHITECT OR ENGINEER IN YOUR LOCAL AREA TO DETERMINE THE ADEQUACY OF THE BUILDING SUPPORT. THERE SHOULD BE NO DEVIATION FROM THE RECOMMENDED FOUNDATION SIZE OR INSTALLATION RECOMMENDATIONS WITHOUT FIRST CONSULTING A QUALIFIED PROFESSIONAL.**

## **MAST INSTALLATION:**

**NOTE: It is recommended to use a preset leveling plate (by others) and grout to provide a level lower mounting base.**

There are several types of base plate leveling methods to be used:

1. Before installation of any foundation, reinforcement, leveling plate, and anchor bolts, refer to the dimensions sheet of your specific model jib crane (see pages 6-7).
2. Verify the exact height of the mast assembly (Dimension B). Verify that the jib mast will fit into the space provided, while maintaining the 3/8" space between the top bearing housing and the shaft shoulder of the upper bearing assembly (the 3/8" space is provided to accommodate sag of the ceiling due to snow or other extraordinary loading conditions on the roof). Installation of the jib is to be done at such time that no snow or extraordinary loading conditions exist.
3. Clamp the top bearing housing to the proposed support location. Level the housing in two (2) directions. Mark the location of the bolt holes using the housing as a template. Remove the bearing housing and find the center of the bracket by scribing an "X" through the marked hole centers.
4. Use a plumb bob to find the center location for the lower bearing housing bracket.

**NOTE: Bearing center tolerance is required to be within +/- 1/16" from the top to bottom bracket.**

5. Place the bottom bearing housing to the center location established in the above step. Level the housing in two (2) directions. Mark the mounting hole locations using the housing as a template.
6. Drill the mounting holes for the bottom bearing housing using the housing as a guide.
7. Relocate and clamp the top bearing housing and drill the required holes using the housing as a guide.
8. Assemble the top and bottom bearing housing on the mast and stand the mast upright. Slide the mast assembly into position and bolt the housings to the floor and to the upper support system.
9. Check the mast to verify that it is plumb in line with all four bolts. This can be done by establishing a plumb line off the top bearing housing and measuring the distance between the line and the mast. If this measurement is not consistent, with the full length of the mast, adjust the bearing housings accordingly.
10. When mast is plumb, tighten the locking nuts.

**NOTE: Do not grout until installation of boom is complete.**

## **BOOM INSTALLATION:**

**NOTE: Do not install the boom until the mast is installed properly and plumbed.**

1. To compensate for anticipated deflection, it may be necessary to adjust boom with the tip raised a distance equal to half the expected deflection. Each boom is designed for a maximum deflection of  $\text{Boom Length (inches)} \div 150$ . The boom top would therefore be raised =  $\text{Boom Length (inches)} \div 300$ .
2. Raise boom to the mounting location on the mast and install as follows:
  - a) **For 200 Series:**
    - 1) Locate the boom to the mast and install using the bolts provided with the jib crane. Insert the top plate bolts and loosely tighten. Install the lower bolts to the mast and loosely tighten.
    - 2) Level the boom with the mast using a minimum 6'-0" level. Shim stock may be used at the lower bolts for leveling.
  - b) **For 201 Series:**
    - 1) Locate the boom to the mast and install using Drop Boom Pin and the bolts provided with the jib crane. Insert the Drop Boom Pin. Install the lower bolts to the mast and loosely tighten.
    - 2) Level the boom with the mast using a minimum 6'-0" level. Shim stock may be used at the lower bolts for leveling.
3. Tighten all bolts.
4. Re-check for plumb and level. Adjust as necessary.
5. If your jib crane requires grout at the base plate, it should be grouted at this time.

## **ACCEPTANCE TEST:**

After the jib crane has been installed, OSHA requires an acceptance test before operating and also after any modifications. This acceptance test should be performed by an authorized dealer or installer.

## **MAINTENANCE:**

Once installation is complete the jib crane system should be checked thoroughly for tightness of nuts and bolts. In order to maintain efficient operating condition, SPANCO recommends establishing a regular inspection and lubrication schedule. Inspection of all parts should be made. Loose parts should be adjusted and worn parts should be replaced immediately.

If a specific usage pattern cannot be determined, the crane operator or maintenance engineer should estimate when the crane should be lubricated. Generally, a jib crane operating 24 hours per day, seven days per week requires lubrication at least once a week. A jib crane operating eight hours per day, five days per week requires lubrication once every two to three weeks. A jib crane operating once or twice a month requires lubrication at least once every six months.

**NOTE: The points requiring lubrication are the main pivot bearings.**

**RECOMMENDED LUBRICANTS:**

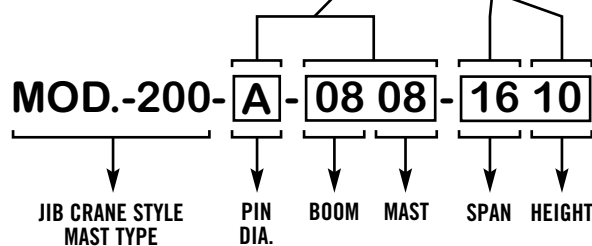
NLGI No. 1 or No. 2 greases.

**HOW TO ORDER A SPANCO MAST TYPE JIB CRANE:**

When ordering a SPANCO Mast Type Jib Crane, the correct model number should be designated, including information on a specific model such as type of model, mast size, beam size, pin size, span and total height, an example of a SPANCO model number for a 500#, 16'-0" span, 10'-0" overall height "full cantilever" mast mounted jib crane is as follows:

**SPANCO** **MAST TYPE JIB CRANE-360° ROTATION**  
**FULL CANTILEVER-MODEL-200-□ - □□ - □□□**  
**\*DROP CANTILEVER-MODEL-201-□ - □□ - □□□**

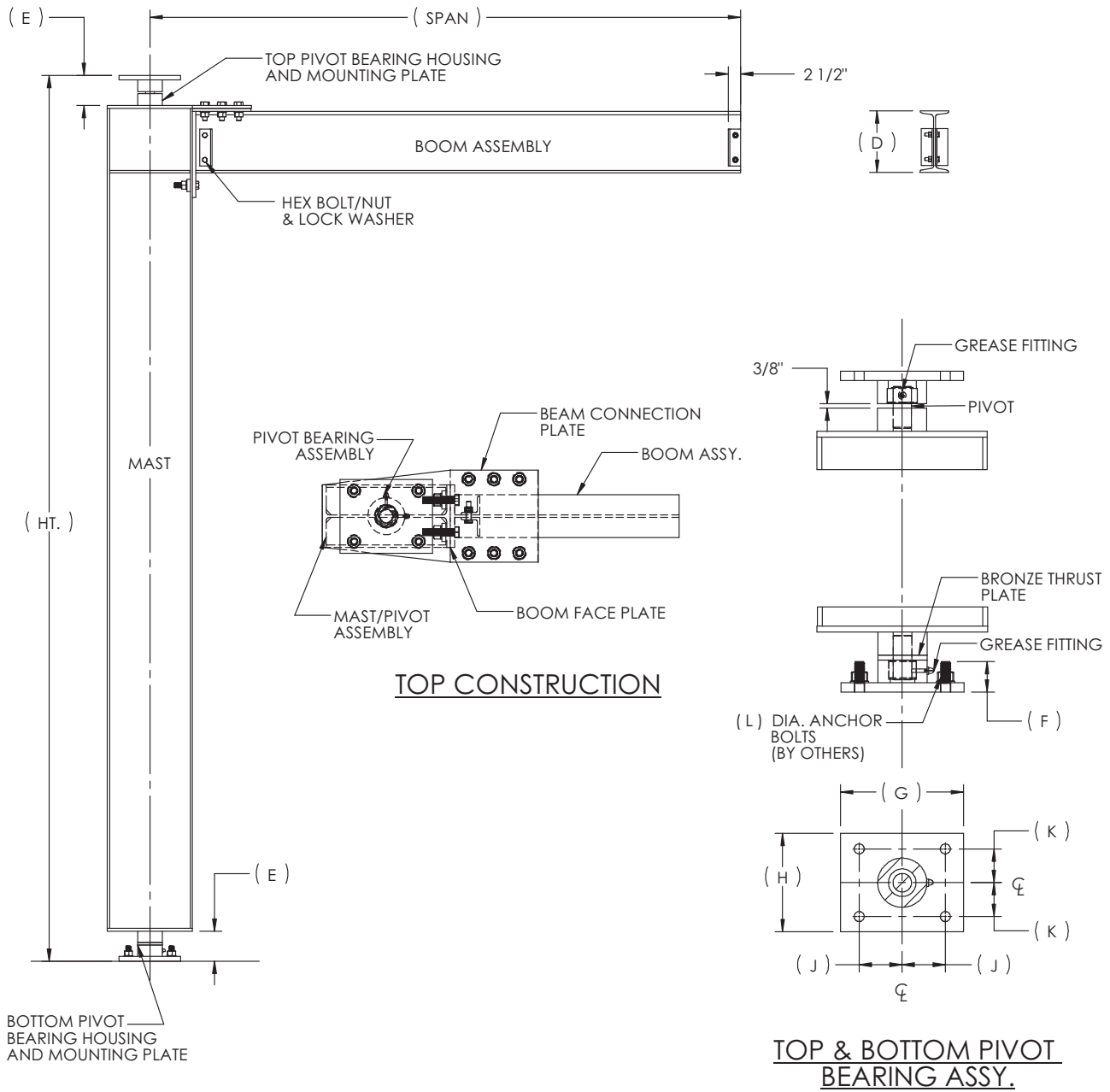
1/4 TON CAPACITY								
DIM. B	SPAN A	8	10	12	14	16	18	20
10	MODEL	A 0608	A 0608	A 0808	A 0808	A 0808	A 1010	A 1010
	WEIGHT	430	465	565	600	635	865	920
	PRICE							
12	MODEL	A 0608	A 0608	A 0808	A 0808	A 0808	A 1010	A 1010
	WEIGHT	475	500	590	630	670		
	PRICE							
14	MODEL							



This is the model number of a specific mast type jib crane. The number 200 specifies the type of the mast mounted jib crane, in this case a full cantilever model. The prefixed letter specifies the selected model's pivot pin diameter, the next group of four numbers denotes the beam size (depth) of boom assembly, and beam size (width) of mast assembly respectively. The last group of four numbers specify the span and the height of selected model. This same procedure is used for the drop cantilever model except that the first three digits would be 201 rather than 200.

Further information on the models, such as weight of selected model can be found in the price list. Dimensional information pertaining to drilling patterns of mounting plates, hardware, fittings, etc., can be obtained from the dimension sheets following price list.

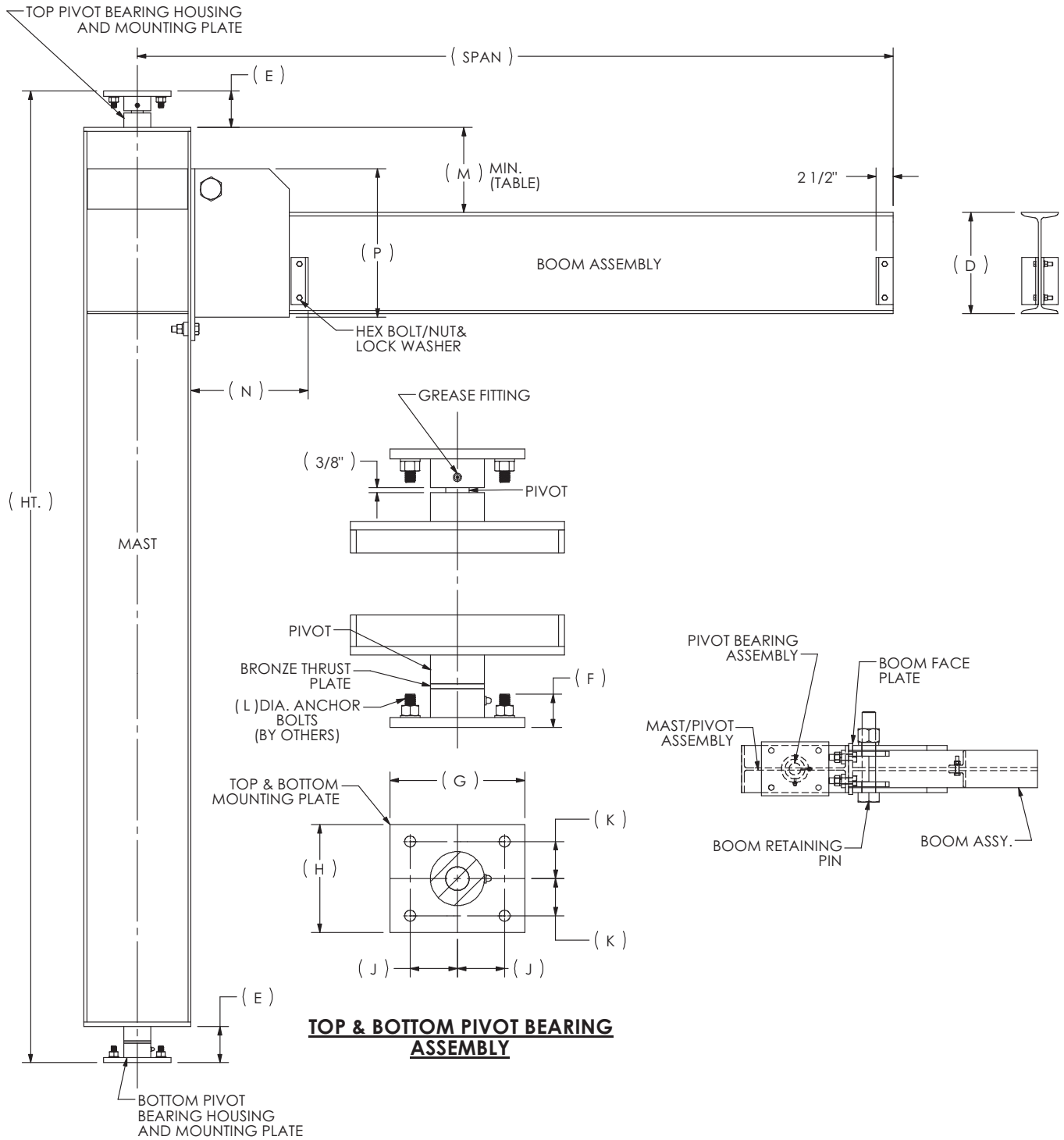
# MAST TYPE JIB CRANE-360° ROTATION FULL CANTILEVER-MODEL-200---



## PIVOT MOUNTING DIMENSIONS

	PIVOT NOM. DIA.	E	F	G	H	J	K	L
A	1 1/2"	4 7/8"	4 1/2"	10"	8"	3 1/2"	2 3/4"	3/4" DIA.
B	1 3/4"	5 3/8"	5"	10"	8"	3 1/2"	2 3/4"	3/4" DIA.
C	2 1/2"	7 3/8"	7"	12"	9"	4 1/2"	2 3/4"	1" DIA.

# MAST TYPE JIB CRANE-360° ROTATION DROP CANTILEVER-MODEL-201- - -



**PIVOT MOUNTING DIMENSIONS**

	PIVOT NOM. DIA.	E	F	G	H	J	K	L
A	1 1/2"	4 7/8"	4 1/2"	10"	8"	3 1/2"	2 3/4"	3/4" DIA.
B	1 3/4"	5 3/8"	5"	10"	8"	3 1/2"	2 3/4"	3/4" DIA.
C	2 1/2"	7 3/8"	7"	12"	9"	4 1/2"	2 3/4"	1" DIA.

**TABLE-I**

D DIM BEAM	6	7	8	10	12	15	18	20R	24R	25R
M (MIN)	3 7/8"	4	4	5	5 1/8	7 1/8	7 1/8	13	13	13
N	8	8	8	10 1/8	10 1/8	17 1/2	21	21	21	21
P	-	-	-	-	-	-	30	30	30	30



## FIVE-YEAR EQUIPMENT WARRANTY

SPANCO offers this Equipment Warranty (the "Warranty") on the following equipment:

- Manually propelled Free Standing and Ceiling Mounted Workstation Bridge Cranes.
- Manually propelled Monorails.
- Manually propelled ALU-TRACK Bridge Cranes and Monorails.
- Manually rotated Enclosed Track and I-Beam Jib Cranes.
- Manually propelled Gantries.
- Manually propelled Articulating Jib Cranes.
- ALL motorized SPANCO products come with a one year warranty on drive components.

SPANCO warrants the Equipment and wearable end truck and trolley wheels only, to be free from defects in material and workmanship for a period of five (5) years or 10,000 hours (whichever occurs first), commencing on the date of shipment to the first retail purchaser ("Purchaser"). This Warranty does not extend to Equipment which has been subject to misuse, use in excess of rated capacity, negligent operation, use beyond SPANCO's published service factors, improper installation or maintenance, and does not apply to any Equipment which has been repaired or altered without SPANCO's written authorization. Written notice of any claimed defect must be given to SPANCO within thirty (30) days after such defect is discovered. SPANCO's obligation, and Purchaser's sole remedy under this Warranty is limited to, at SPANCO's discretion, the replacement or repair of the Equipment at SPANCO's factory or at a location approved by SPANCO. Purchaser is responsible for all freight and transportation costs relating to the repair or replacement of the Equipment. **THE FOREGOING WARRANTY IS EXPRESSLY IN LIEU OF ALL OTHER WARRANTIES WHATSOEVER WHETHER EXPRESS, IMPLIED, OR STATUTORY. SELLER MAKES NO WARRANTY AS TO THE MERCHANTABILITY OR FITNESS FOR A PARTICULAR PURPOSE OF THE EQUIPMENT AND MAKES NO OTHER WARRANTY, EITHER EXPRESS OR IMPLIED.** SPANCO shall not be liable, under any circumstances, for any indirect, special or consequential damages including, but not limited to, lost profits, increased operating costs or loss of production. This Warranty shall not extend to any components or accessories not manufactured by SPANCO (such as casters), and Purchaser's remedy for such components and accessories shall be determined by the terms and conditions of any warranty provided by the manufacturer of such components and accessories.

## SERVICE POLICY

1. Obtain as much information as possible concerning the problem through personal observation by yourself or other authorized personnel familiar with the job and equipment: include model, serial and/or part numbers, voltages, speeds and any other special identifying features. Be prepared to discuss the situation in detail.
2. All authorized labor charges will be based on straight time. Hourly rates, estimated man hours, and not to exceed total dollar amount required for corrections are to be agreed upon before authorization is given. There will be no allowances for overtime except in dire emergencies and then only with prior approval.
3. A verbal agreement may be reached immediately on both the method of correction and the approximate cost. A warranty authorization number will be assigned for the specific incident. A confirming written authorization will be forwarded to the distributor.
4. The distributor must send an itemized invoice, showing our release number or invoice number and warranty authorization number after authorized corrections have been made. A credit memo will be issued by accounting after the invoice has been received and approved. Warranty charges ARE NOT to be deducted from outstanding open account invoices under any circumstances.
5. Any field corrections made prior to an authorization by SPANCO will not be accepted as a warranty charge or the responsibility of SPANCO. Any modification to the equipment made without the prior approval of the seller will void all warranties. A verbal authorization for modification may be obtained, in which event a warranty authorization number will be assigned for the specific modification. A confirming written authorization will be forwarded to the distributor.

*This warranty and service policy will be incorporated as a permanent section of the current price book as issued by SPANCO.*